

ARMY TM 11-5805-610-24P
AIR FORCE TO31W2-4-252-4

**ORGANIZATIONAL, DIRECT SUPPORT, AND
GENERAL SUPPORT MAINTENANCE**

REPAIR PARTS AND SPECIAL TOOLS LISTS

**(INCLUDING DEPOT MAINTENANCE REPAIR PARTS
AND SPECIAL TOOLS)**

FOR

**CONVERTER, SIGNAL FREQUENCY
CV-2981(P)/FSC**

(NSN 5805-00-482-6390)

INDICATOR-FUSE ASSEMBLY ID-1849/FSC

(NSN 5805-00-491-6897)

AND

**FREQUENCY SUPPLY, TELEPHONE,
SIGNALING TA-876/FSC**

(NSN 5805-00-472-3990)

DEPARTMENTS OF THE ARMY AND THE AIR FORCE
APRIL 1977

*TM 11-5805-610-24P

TO31W2-4-252-4

TECHNICAL MANUAL
No. 11-5805-610-24P
TECHNICAL ORDER
TO 31W2-4-252-4

DEPARTMENTS OF THE ARMY
AND THE AIR FORCE

WASHINGTON, DC, 29 April 1977

**ORGANIZATIONAL, DIRECT SUPPORT, AND GENERAL SUPPORT MAINTENANCE
REPAIR PARTS AND SPECIAL TOOLS LISTS
(INCLUDING DEPOT MAINTENANCE REPAIR PARTS AND SPECIAL TOOLS)
FOR
CONVERTER, SIGNAL FREQUENCY CV-2981(P)/FSC (NSN 5805-00-482-6390)
INDICATOR-FUSE ASSEMBLY ID-1849/FSC (NSN 5805-00-491-6897)
AND
FREQUENCY SUPPLY, TELEPHONE, SIGNALING TA-876/FSC
(NSN 5805-00-472-3999)**

Current as of 28 December 1976

REPORTING OF ERRORS

You can improve this manual by recommending improvements using DA Form 2028-2 (Test) located in the back of the manual. Simply tear out the self-addressed form, fill it out as shown on the sample, fold it where shown, and drop it in the mail.

If there are no blank DA Forms 2028-2 (Test) in the back of your manual, use the standard DA Form 2026 (Recommended Changes to Publications and Blank Forms) and forward to the Commander, US Army Electronics Command, ATTN: DRSEL-MA-Q, Fort Monmouth, New Jersey 07703.

For Air Force, use USAFLC Form 252 (Request for TO Revision or Change). Forward direct to prime ALC/MST.

In either case a reply will be furnished direct to you.

*This manual supersedes so much of TM 11-5805-610-14/TO 31W2-4-252-1, 1 April 1973, including Change 1, 1 November 1973, as pertains to repair parts and special tools lists.

Table of Contents

Section		Page	Illustration Figure
	I. Introduction	1	
	II. Repair parts list	5	
Group	00 Converter, Signal Frequency CV-2681(P)/FSC	5	1
	00 Indicator-Flare Assembly ID-1949/FSC (Tele Signal SR135E)	18	6
	00 Frequency Supply, Telephone, Signaling TA-576/FSC (Tele Signal 2571A)	20	8
	01 Shelf, signaling equipment (Tele Signal 6065)	23	9
	02 Circuit card assembly, AM tone layer (Tele Signal 47A)	27	11
	03 Circuit card assembly, power amplifier (Tele Signal 25A)	31	12
	04 Circuit card assembly, transfer and alarm (Tele Signal 672A)	35	13
Section	III. Special tools list (Not applicable)		
	IV. National stock number and part number index		

SECTION I

INTRODUCTION

1. Scope

This manual lists spares and repair parts; special tools; special test, measurement, and diagnostic equipment (TMDE), and other special support equipment required for performance of organizational, direct support, and general support maintenance of the CV-2981(P1)/FSC, ID-1949/FSC, and TA-876/FSC. It authorizes the requisitioning and issue of spares and repair parts as indicated by the source and maintenance codes.

2. General

This Repair Parts and Special Tools List is divided into the following sections:

a. *Section II. Repair Parts List.* A list of spares and repair parts authorized for use in the performance of maintenance. The list also includes parts which must be removed for replacement of the authorized parts. Parts lists are composed of functional groups in numeric sequence, with the parts in each group listed in figure and item number sequence.

b. *Section III. Special Tools List.* Not applicable.

c. *Section IV. National Stock Number and Part Number Index.* A list, in National item identification number (NIIN) sequence, of all National stock numbers (NSN) appearing in the listings, followed by a list, in alphanumeric sequence, of all part numbers appearing in the listings. National stock numbers and part numbers are cross-referenced to each illustration figure and item number appearance.

3. Explanation of Columns

a. *Illustration.* This column is divided as follows:

(1) *Figure number.* Indicates the figure number of the illustration on which the item is shown.

(2) *Item number.* The number used to identify item called out in the illustration.

b. *Source, Maintenance, and Recoverability (SMR) Codes.*

(1) *Source code.* Source codes indicate the manner of acquiring support items for maintenance, repair, or overhaul of end items. Source codes are entered in the first and second positions of the Uniform SMR Code format as follows:

Code

Definition

PA—Item procured and stocked for anticipated or known usage.

XD—A support item that is not stocked. When required, item will be procured through normal supply channels.

NOTE

Cannibalization or salvage may be used as a source of supply for any items source coded above except those coded XA and aircraft support items as restricted by AR 700-42.

(2) *Maintenance code.* Maintenance codes are assigned to indicate the levels of maintenance authorized to USE and REPAIR support items. The maintenance codes are entered in the third and fourth positions of the Uniform SMR Code format as follows:

(a) The maintenance code entered in the third position will indicate the lowest maintenance level authorized to remove, replace, and use the support item. The maintenance code entered in the third position will indicate one of the following levels of maintenance:

Code

Application/Explanation

O—Support item is removed, replaced, used at the organizational level.

F—Support item is removed, replaced, used at the direct support level.

H—Support item is removed, replaced, used at the general support level.

(b) The maintenance code entered in the fourth position indicates whether the item is to be repaired and identifies the lowest maintenance level with the capability to perform complete repair (i.e., all authorized maintenance functions). This position will contain one of the following maintenance codes:

Code

Application/Explanation

F—The lowest maintenance level capable of complete repair of the support item is the direct support level.

H—The lowest maintenance level capable of complete repair of the support item is the general support level.

Z—Nonreparable. No repair is authorized.

(3) **Recoverability code.** Recoverability codes are assigned to support items to indicate the disposition action on unserviceable items. The recoverability code is entered in the fifth position of the Uniform SMR Code format as follows:

<i>Recoverability codes</i>	<i>Definition</i>
Z—Nonreparable item.	When unserviceable, condemn and dispose at the level indicated in position 3.
F—Reparable item.	When uneconomically repairable, condemn and dispose at the direct support level.
H—Reparable item.	When uneconomically repairable, condemn and dispose at the general support level.

c. **National Stock Number.** Indicates the National stock number assigned to the item and will be used for requisitioning purposes.

d. **Part Number.** Indicates the primary number used by the manufacturer (individual, company, firm, corporation, or Government activity), which controls the design and characteristics of the item by means of its engineering drawings, specifications, standards, and inspection requirements to identify an item or range of items.

NOTE

When a stock numbered item is requisitioned, the repair part received may have a different part number than the part being replaced.

e. **Federal Supply Code for Manufacturer (FSCM).** The FSCM is a 5-digit numeric code listed in SB 708-42 which is used to identify the manufacturer, distributor, or Government agency, etc.

f. **Description.** Indicates the Federal item name and, if required, a minimum description to identify the item.

g. **Unit of Measure (U/M).** Indicates the standard of the basic quantity of the listed item as used in performing the actual maintenance function. This measure is expressed by a two-character alphabetical abbreviation (e.g., ea, in, pr, etc). When the unit of measure differs from the unit of issue, the lowest unit of issue that will satisfy the required units of measure will be requisitioned.

h. **Quantity Incorporated in Unit.** Indicates the

quantity of the item used in the breakout shown on the illustration figure, which is prepared for a functional group, subfunctional group, or an assembly.

4. Special Information

a. Usable on codes are shown in the description column. Uncoded items are applicable to all models. Identification of the usable on codes used in this publication are:

<i>Code</i>	<i>Used on</i>
5DH	CV-2981(P)/FSC
5DJ	TA-876/FSC
AV2	ID-1849/FSC

b. The following publication pertains to the CV-2981(P)/FSC, ID-1849/FSC, and TA-876/FSC and their components:

TM 11-5805-610-14, Signal Frequency Converter CV-2981(P)/FSC, Telephone Signaling Frequency Supply TA-876/FSC, and Indicator-Tune Assembly ID-1849/FSC

5. How to Locate Repair Parts

a. When National stock number or part number is unknown.

(1) *First.* Using the table of contents, determine the functional group within which the item belongs. This is necessary since illustrations are prepared for functional groups and listings are divided into the same groups.

(2) *Second.* Find the illustration covering the functional group to which the item belongs.

(3) *Third.* Identify the item on the illustration and note the illustration figure and item number of the item.

(4) *Fourth.* Using the Repair Parts Listing, find the figure and item number noted on the illustration.

b. When National stock number or part number is known.

(1) *First.* Using the Index of National Stock Numbers and Part Numbers, find the pertinent National stock number or part number. This index is in NIIN sequence followed by a list of part numbers in alphabetic sequence, cross-referenced to the illustration figure number and item number.

(2) *Second.* After finding the figure and item number, locate the figure and item number in the repair parts list.

6. Abbreviations

Not applicable.

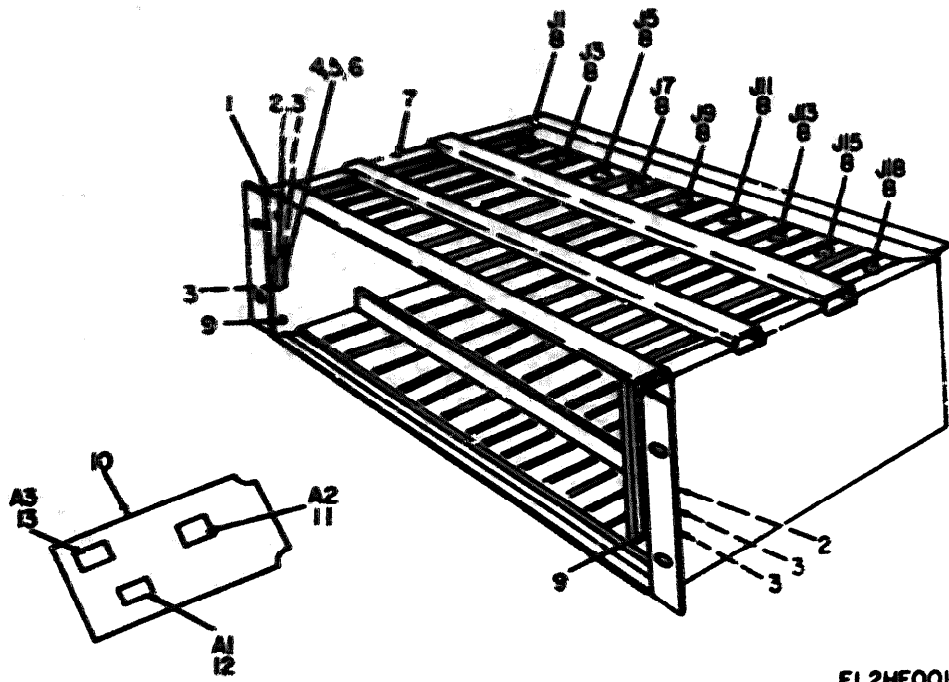


Figure 1. Converter, Signal Frequency, CV-2981(P)/FSC Chassis View.

SECTION II

TM 11-5805-610-24P/T031W2-4-252-4

QUANTITY		UNIT	NATIONAL STOCK NUMBER	PART NUMBER	DESCRIPTION	UNABLE TO CODE	L/P	QTY
REQ	ISS							
GROUP 00 CONNECTER, SIGNAL EQUIPMENT								
CU-280247/AFK								
1	1	2805-00-000-0100	4025	10241	CARD RICH	500	EA	1
1	2	2805-00-000-0050	40-1-1-0	94223	LOCK, RICH	500	EA	2
1	3	2805-00-700-0100	2300	60030	SPACE, SLOTTED	500	EA	4
1	4	2805-00-700-0100	2300	60030	SPACE, SLOTTED	500	EA	4
1	1	2805-00-000-0000	2805000-01	60000	WIRE, LOCK	500	EA	0
1	4	2805-00-000-0000	2805000-00	60000	WIRE, LOCK	500	EA	4
1	7	2805-00-000-0000	2805000-05	60000	WIRE, LOCK	500	EA	1.2
1	1	2805-00-000-0000	2805000-100	60000	WIRE, LOCK	500	EA	1
1	1	2805-00-000-0000	2805000-05	60000	WIRE, LOCK	500	EA	2
1	10	2805-00-000-0100	700-13000-1	40000	CIRCUIT CARD ASSEMBLY	500	EA	1
1	12	2805-00-000-0100	700-13000-1	40000	CIRCUIT CARD ASSEMBLY	500	EA	2
1	14	2805-00-000-0100	700-13000-1	40000	CIRCUIT CARD ASSEMBLY	500	EA	1
1	18	2805-00-000-0100	700-13000-1	40000	CIRCUIT CARD ASSEMBLY	500	EA	1

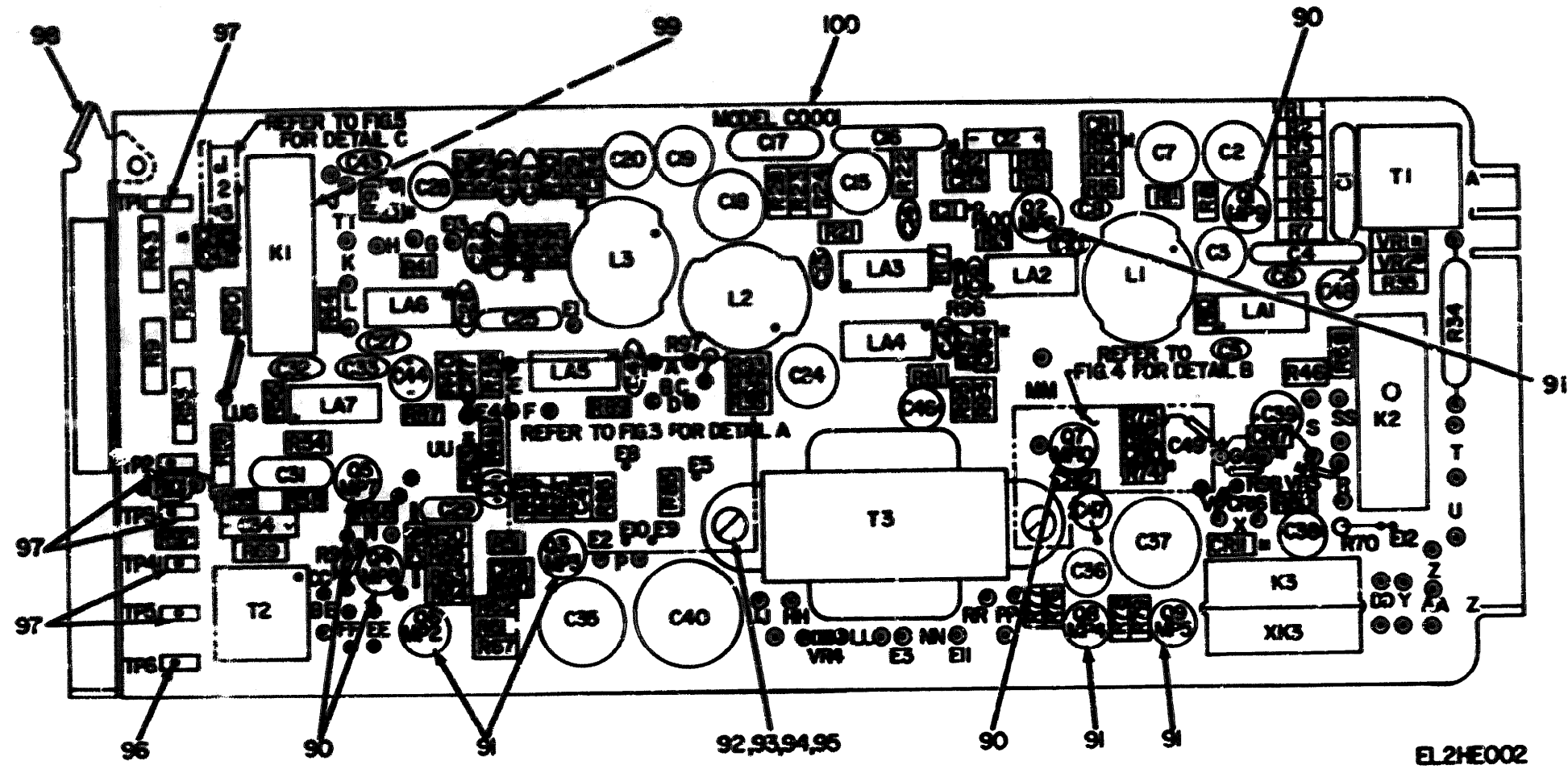


Figure 2. Converter, Signal Frequency, CV-2981(P)/FSC, Signal Set Card (Sheet 1 of 3).

REF DES.	ITEM NO.	REF DES.	ITEM NO.	REF DES.	ITEM NO.	REF DES.	ITEM NO.	REF DES.	ITEM NO.	REF DES.	ITEM NO.	REF DES.	ITEM NO.	REF DES.	ITEM NO.
C1	1	C17	9	C33	5	C49	27	CR16	30	Q2	37	R9	46	R26	52
C2	2	C18	13	C34	20	CR1	28	CR17	30	Q3	38	R10	47	R27	53
C3	3	C19	3	C35	21	CR2	29	K1	31	Q4	36	R11	43	R28	56
C4	1	C20	14	C36	22	CR3	29	K2	31	Q5	36	R13	47	R29	56
C5	4	C21	15	C37	21	CR4	28	K3	32	Q6	38	R14	41	R30	57
C6	5	C22	16	C38	23	CR5	28	L1	33	Q7	36	R15	48	R32	43
C7	6	C23	15	C39	23	CR6	28	L2	33	Q8	38	R16	43	R33	43
C8	7	C24	6	C40	24	CR7	29	L3	34	Q9	38	R17	42	R34	58
C9	8	C25	17	C41	4	CR8	28	LA1	35	R1	39	R18	49	R35	59
C10	3	C26	4	C42	4	CR9	30	LA2	35	R2	40	R19	47	R36	53
C11	9	C27	3	C43	4	CR10	30	LA3	35	R3	40	R20	50	R37	55
C12	10	C28	18	C44	25	CR11	30	LA4	35	R4	41	R21	47		
C13	11	C29	1	C45	15	CR12	30	LA5	35	R5	42	R22	51		
C14	12	C30	19	C46	26	CR13	29	LA6	35	R6	43	R23	52		
C15	2	C31	9	C47	19	CR14	29	LA7	35	R7	44	R24	53		
C16	1	C32	4	C48	19	CR15	28	Q1	36	R8	45	R25	54		

EL2NE003

Figure 2. Converter, Signal Frequency, CV-2981(P)/FSC, Signal Set Card
(Sheet 2 of 3).

REF. DES.	ITEM NO.	REF. DES.	ITEM NO.	REF. DES.	ITEM NO.	REF. DES.	ITEM NO.
R38	55	R55	67	R75	52	R94	43
R39	49	R56	47	R76	55	R95	77
R40	60	R58	68	R77	36	R96	57
R41	47	R59	66	R78	39	R97	78
R42	49	R60	62	R79	55	R98	60
R43	61	R61	62	R80	73	R99	79
R44	41	R62	67	R81	47	R100	80
R45	62	R53	43	R82	74	R101	81
R46	41	R64	69	R85	71	T1	82
R47	55	R65	54	R86	71	T2	83
R48	63	R66	39	R87	43	T3	84
R49	51	R67	39	R89	47	VR1	85
R50	64	R68	70	R90	51	VR2	86
R51	65	R69	71	R91	75	VR3	87
R53	66	R70	72	R92	53	VR4	88
R54	43	R74	43	R93	76	XK3	89

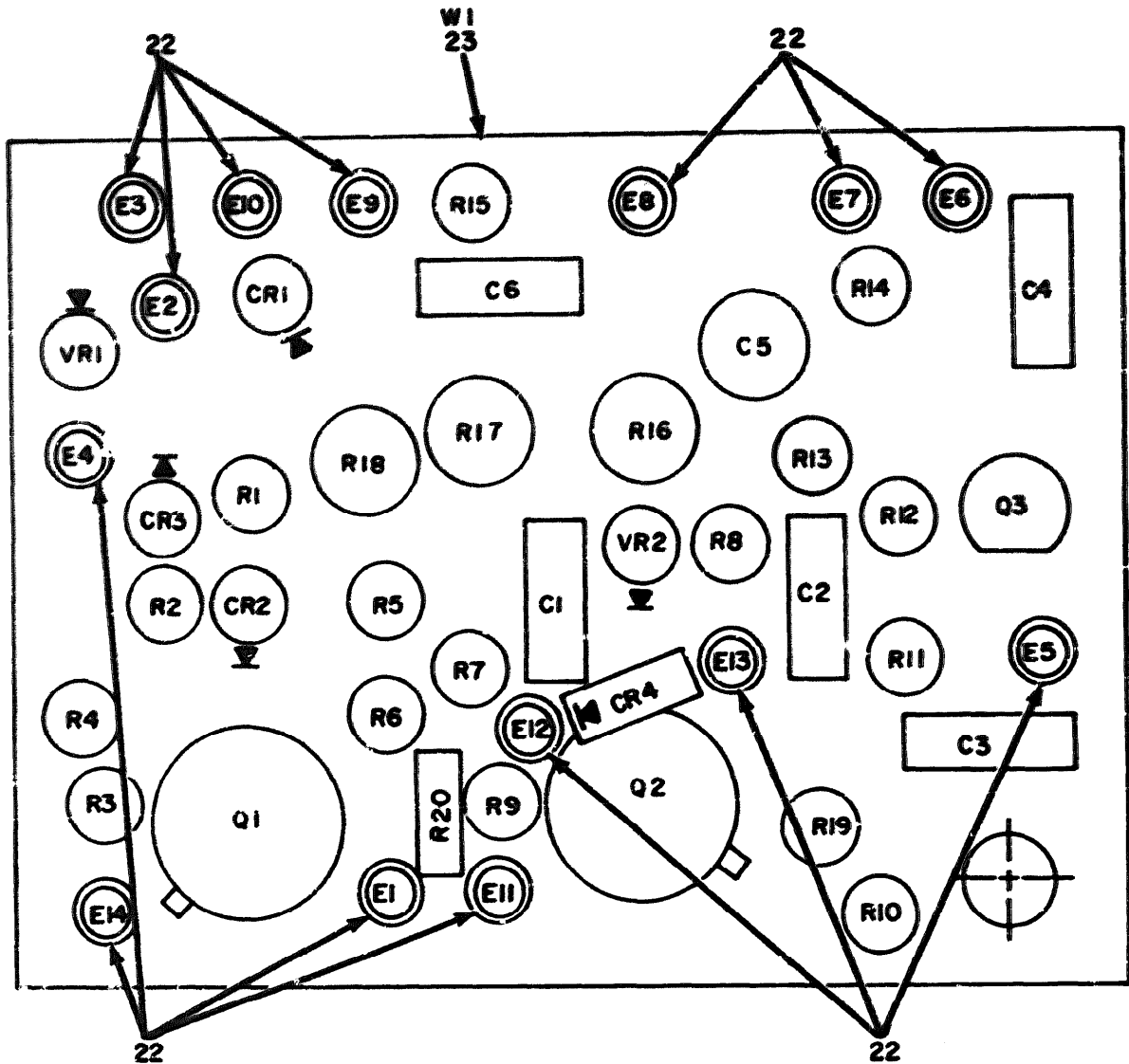
EL2HE0J4

Figure 2. Converter, Signal Frequency, CV-2981(P)/FSC, Signal Set Card (Sheet 3 of 3).

(1) QUANTITY	(2) UNIT	(3) PART NUMBER	(4) NATIONAL STOCK NUMBER	(5) PART NUMBER	(6) PCNN	(7) DESCRIPTION	(8) USABLE ON CODE	(9) MFR	(10) QTY INC IN UNIT
2	1	PAP22	5910-00-156-6833	403-23-28PCT	91410	CAPACITOR, FIXED, CERAMIC	50H	EA	4
2	2	PAP22	5910-00-270-6095	TCM474RE	10241	CAPACITOR, FIXED, PLASTIC	50H	EA	2
2	3	PAP22	5910-00-155-0504	20P50301C	91410	CAPACITOR, FIXED, CERAMIC	50H	EA	4
2	4	XKPE		JF001-10PCT	91410	CAPACITOR, FIXED, CERAMIC	50H	EA	6
2	5	PAP22	5910-00-421-0782	C32W750-10PCT	91410	CAPACITOR, FIXED, CERAMIC	50H	EA	2
2	6	PAP22	5910-00-235-4049	TCM274RE	10241	CAPACITOR, FIXED, PLASTIC	50H	EA	2
2	7	PAP22	5910-00-156-0270	JF120-10PCT	91410	CAPACITOR, FIXED, CERAMIC	50H	EA	1
2	8	PAP22	5910-00-153-9364	300-1075-14	40090	CAPACITOR, FIXED, CERAMIC	50H	EA	1
2	9	PAP22	5910-00-422-7764	C30403104K	01349	CAPACITOR, FIXED, CERAMIC	50H	EA	3
2	10	PAP22	5910-00-433-2004	C30130475H5	01349	CAPACITOR, FIXED, ELECTROLYTIC	50H	EA	1
2	11	PAP22	5910-00-430-4664	JF470-10PCT	91410	CAPACITOR, FIXED, CERAMIC	50H	EA	-
2	12	PAP22	5910-00-931-9414	C47W750-10PCT	91410	CAPACITOR, FIXED, CERAMIC	50H	EA	1
2	13	PAP22	5910-00-100-7264	20P100301C	12073	CAPACITOR, FIXED, PLASTIC	50H	EA	1
2	14	PAP22	5910-00-238-6833	TCM1024RE	10241	CAPACITOR, FIXED, PLASTIC	50H	EA	1
2	15	XKPE		7401-30PCT	91410	CAPACITOR, FIXED, CERAMIC	50H	EA	3
2	16	XKPE		7405-30PCT	91410	CAPACITOR, FIXED, CERAMIC	50H	EA	1
2	17	PAP22	5910-00-462-2718	3002-20PCT	91410	CAPACITOR, FIXED, CERAMIC	50H	EA	1
2	18	XKPE		TCM0240H1	10241	CAPACITOR, FIXED, PLASTIC	50H	EA	1
2	19	PAP22	5910-00-928-4984	1500224N9030A2	50200	CAPACITOR, FIXED, ELECTROLYTIC	50H	EA	3
2	20	PAP22	5910-00-147-1000	C30130425K5	01349	CAPACITOR, FIXED, ELECTROLYTIC	50H	EA	1
2	21	PAP22	5910-00-238-6038	TCM2057E	10241	CAPACITOR, FIXED, PLASTIC	50H	EA	2
2	22	PAP22	5910-00-156-0258	PCN10P050	24130	CAPACITOR, FIXED, ELECTROLYTIC	50H	EA	1
2	23	XKPE		PCN50P050	24130	CAPACITOR, FIXED, ELECTROLYTIC	50H	EA	2
2	24	PAP22	5910-00-238-6054	TCM370J72	10241	CAPACITOR, FIXED, PLASTIC	50H	EA	1
2	25	PAP22	5910-00-156-6264	PCN50P050	24130	CAPACITOR, FIXED, ELECTROLYTIC	50H	EA	1
2	26	XKPE		PCN10P050	24130	CAPACITOR, FIXED, ELECTROLYTIC	50H	EA	1
2	27	PAP22	5910-00-104-6244	1500102N9030A2	50200	CAPACITOR, FIXED, ELECTROLYTIC	50H	EA	1
2	28	PAP22	5961-00-892-0734	10056A	00131	SEMICONDUCTOR DEVICE, DIODE	50H	EA	6
2	29	PAP22	5961-00-689-6034	10277	01349	SEMICONDUCTOR DEVICE, DIODE	50H	EA	5
2	30	PAP22	5961-00-620-4703	100002	00131	SEMICONDUCTOR DEVICE, DIODE	50H	EA	6
2	31	PAP22	5945-00-148-5821	XR10010	10241	RELAY, ARMATURE	50H	EA	2
2	32	PAP22	5945-00-454-3351	XR10000	10241	RELAY, ARMATURE	50H	EA	1
2	33	PAP22	5950-00-112-4613	1V10000-061	10241	COIL, RADIO FREQUENCY	50H	EA	2
2	34	PAP22	5950-00-112-4614	1V10000-062	10241	COIL, RADIO FREQUENCY	50H	EA	1
2	35	PAP22	5962-00-222-3338	1C51A	10241	INTEGRATED CIRCUIT	50H	EA	7
2	36	PAP22	5961-00-828-0721	2N3459	00713	TRANSISTOR	50H	EA	4
2	37	PAP22	5961-00-978-9667	2N3647	00131	TRANSISTOR	50H	EA	1
2	38	PAP22	5961-00-912-5808	2N3638A	00131	TRANSISTOR	50H	EA	4
2	39	PAP22	5905-00-186-9356	RCR070203J5	01349	RESISTOR, FIXED, COMPOSITION	50H	EA	5
2	40	PAP22	5905-00-119-3504	RCR070273J5	01349	RESISTOR, FIXED, COMPOSITION	50H	EA	2

QUANTITY		UNIT	NATIONAL STOCK NUMBER	PART NUMBER	ITEM	DESCRIPTION	AVAILABLE ON CODE	UNIT	QTY
REQD	AVAIL								
2	40	PAF22	9905-00-400-4320	ACR076120JS	01340	RESISTOR, FIXED, COMPOSITION	SD	EA	4
2	40	PAF22	9905-00-110-7622	ACR076102JS	01340	RESISTOR, FIXED, COMPOSITION	SD	EA	2
2	40	PAF22	9905-00-106-0660	ACR076109JS	01340	RESISTOR, FIXED, COMPOSITION	SD	EA	10
2	40	PAF22	9905-00-104-0300	ACR076022JS	01340	RESISTOR, FIXED, COMPOSITION	SD	EA	1
2	40	PAF22	9905-00-119-0025	ACR076303JS	01340	RESISTOR, FIXED, COMPOSITION	SD	EA	1
2	40	PAF22	9905-00-243-0020	X20R1040	71450	RESISTOR, VARIABLE	SD	EA	1
2	40	PAF22	9905-00-104-1390	ACR076192JS	01340	RESISTOR, FIXED, COMPOSITION	SD	EA	8
2	40	PAF22	9905-00-114-0710	ACR076331JS	01340	RESISTOR, FIXED, COMPOSITION	SD	EA	1
2	40	PAF22	9905-00-109-7707	ACR076474JS	01340	RESISTOR, FIXED, COMPOSITION	SD	EA	3
2	50	PAF22	9905-00-050-7290	X20R2540	71450	RESISTOR, VARIABLE	SD	EA	1
2	70	PAF22	9905-00-110-7620	ACR076109JS	01340	RESISTOR, FIXED, COMPOSITION	SD	EA	3
2	50	PAF22	9905-00-114-0710	ACR076472JS	01340	RESISTOR, FIXED, COMPOSITION	SD	EA	2
2	70	PAF22	9905-00-130-0400	ACR076240JS	01340	RESISTOR, FIXED, COMPOSITION	SD	EA	3
2	50	PAF22	9905-00-122-0000	ACR076433JS	01340	RESISTOR, FIXED, COMPOSITION	SD	EA	2
2	90	PAF22	9905-00-110-0300	ACR076104JS	01340	RESISTOR, FIXED, COMPOSITION	SD	EA	6
2	50	PAF22	9905-00-041-1200	ACR076243JS	01340	RESISTOR, FIXED, COMPOSITION	SD	EA	2
2	50	PAF22	9905-00-109-7700	ACR076224JS	01340	RESISTOR, FIXED, COMPOSITION	SD	EA	2
2	50	PAF22	9905-00-040-1000	X20R1010	71450	RESISTOR, FIXED, WIRE WOUND	SD	EA	1
2	50	PAF22	9905-00-111-0350	ACR080601JS	01340	RESISTOR, FIXED, COMPOSITION	SD	EA	1
2	40	PAF22	9905-00-141-0710	ACR076473JS	01340	RESISTOR, FIXED, COMPOSITION	SD	EA	2
2	40	PAF22	9905-00-007-0140	X20R1040	71450	RESISTOR, VARIABLE	SD	EA	1
2	40	PAF22	9905-00-015-0540	ACR076334JS	01340	RESISTOR, FIXED, COMPOSITION	SD	EA	3
2	40	PAF22	9905-00-104-0370	ACR076341JS	01340	RESISTOR, FIXED, COMPOSITION	SD	EA	1
2	04	PAF22	9905-00-119-2201	ACR076412JS	01340	RESISTOR, FIXED, COMPOSITION	SD	EA	1
2	40	PAF22	9905-00-120-0400	ACR076332JS	01340	RESISTOR, FIXED, COMPOSITION	SD	EA	1
2	40	PAF22	9905-00-090-0220	X20R1030	71450	RESISTOR, VARIABLE	SD	EA	2
2	40	PAF22	9905-00-120-0150	ACR076274JS	01340	RESISTOR, FIXED, COMPOSITION	SD	EA	2
2	40	PAF22	9905-00-121-0020	ACR076391JS	01340	RESISTOR, FIXED, COMPOSITION	SD	EA	1
2	40	PAF22	9905-00-114-0700	ACR076302JS	01340	RESISTOR, FIXED, COMPOSITION	SD	EA	1
2	70	PAF22	9905-00-141-1100	ACR076101JS	01340	RESISTOR, FIXED, COMPOSITION	SD	EA	1
2	70	PAF22	9905-00-031-3000	RNR0000900FS	01340	RESISTOR, FIXED, FILM	SD	EA	3
2	70	PAF22	9905-00-030-2021	X20R1021	56200	RESISTOR, FIXED, WIRE WOUND	SD	EA	1
2	70	PAF22	9905-00-110-0500	ACR076771JS	01340	RESISTOR, FIXED, COMPOSITION	SD	EA	1
2	70	PAF22	9905-00-140-0020	ACR076113JS	01340	RESISTOR, FIXED, COMPOSITION	SD	EA	1
2	70	PAF22	9905-00-130-3091	ACR076021JS	01340	RESISTOR, FIXED, COMPOSITION	SD	EA	1
2	70	PAF22	9905-00-130-3071	ACR076190JS	01340	RESISTOR, FIXED, COMPOSITION	SD	EA	1
2	70	PAF22	9905-00-110-0500	ACR076335JS	01340	RESISTOR, FIXED, COMPOSITION	SD	EA	1
2	70	PAF22	9905-00-041-1130	ACR076792JS	01340	RESISTOR, FIXED, COMPOSITION	SD	EA	1
2	70	PAF22	9905-00-114-0550	ACR076194JS	01340	RESISTOR, FIXED, COMPOSITION	SD	EA	1
2	80	PAF22	9905-00-110-0550	ACR076195JS	01340	RESISTOR, FIXED, COMPOSITION	SD	EA	1

CLASSIFICATION		PART NUMBER	PART NAME	QUANTITY	DESCRIPTION	TABLE OR CASE	QTY	UNIT
NO	SYMBOL							
3	60	90727	RECEPTOR, FINGER, COMPOSITE	1000	RECEPTOR, FINGER, COMPOSITE		100	1
2	40	90728	TRANSFORMER, PLATE	1000	TRANSFORMER, PLATE		200	1/2
2	40	90729	TRANSFORMER, PLATE	1000	TRANSFORMER, PLATE		200	1/2
2	40	90730	TRANSFORMER, PLATE	1000	TRANSFORMER, PLATE		200	1/2
2	40	90731	TRANSFORMER, PLATE	1000	TRANSFORMER, PLATE		200	1/2
2	40	90732	TRANSFORMER, PLATE	1000	TRANSFORMER, PLATE		200	1/2
2	40	90733	TRANSFORMER, PLATE	1000	TRANSFORMER, PLATE		200	1/2
2	40	90734	TRANSFORMER, PLATE	1000	TRANSFORMER, PLATE		200	1/2
2	40	90735	TRANSFORMER, PLATE	1000	TRANSFORMER, PLATE		200	1/2
2	40	90736	TRANSFORMER, PLATE	1000	TRANSFORMER, PLATE		200	1/2
2	40	90737	TRANSFORMER, PLATE	1000	TRANSFORMER, PLATE		200	1/2
2	40	90738	TRANSFORMER, PLATE	1000	TRANSFORMER, PLATE		200	1/2
2	40	90739	TRANSFORMER, PLATE	1000	TRANSFORMER, PLATE		200	1/2
2	40	90740	TRANSFORMER, PLATE	1000	TRANSFORMER, PLATE		200	1/2
2	40	90741	TRANSFORMER, PLATE	1000	TRANSFORMER, PLATE		200	1/2
2	40	90742	TRANSFORMER, PLATE	1000	TRANSFORMER, PLATE		200	1/2
2	40	90743	TRANSFORMER, PLATE	1000	TRANSFORMER, PLATE		200	1/2
2	40	90744	TRANSFORMER, PLATE	1000	TRANSFORMER, PLATE		200	1/2
2	40	90745	TRANSFORMER, PLATE	1000	TRANSFORMER, PLATE		200	1/2
2	40	90746	TRANSFORMER, PLATE	1000	TRANSFORMER, PLATE		200	1/2
2	40	90747	TRANSFORMER, PLATE	1000	TRANSFORMER, PLATE		200	1/2
2	40	90748	TRANSFORMER, PLATE	1000	TRANSFORMER, PLATE		200	1/2
2	40	90749	TRANSFORMER, PLATE	1000	TRANSFORMER, PLATE		200	1/2
2	40	90750	TRANSFORMER, PLATE	1000	TRANSFORMER, PLATE		200	1/2
2	40	90751	TRANSFORMER, PLATE	1000	TRANSFORMER, PLATE		200	1/2
2	40	90752	TRANSFORMER, PLATE	1000	TRANSFORMER, PLATE		200	1/2



EL2HE005

Figure 3. Converter, Signal Frequency, CV-2981(P)/FSC Circuit Card Assembly (A1) (Sheet 1 of 2).

REF. DES.	ITEM NO.	REF. DES.	ITEM NO.	REF. DEF.	ITEM NO.	REF. DEF.	ITEM NO.
C1	1	CR4	6	R6	12	RI5	16
C2	2	Q1	7	R7	13	RI6	17
C3	1	Q2	7	R8	9	RI7	18
C4	3	Q3	8	R9	14	RI8	19
C5	4	R1	9	RI0	9	RI9	14
C6	5	R2	10	RI1	15	R20	15
CR1	6	R3	9	RI2	12	VR1	20
CR2	6	R4	10	RI3	13	VR2	21
CR3	6	R5	11	RI4	9		

EL2HE006

Figure 3. Converter, Signal Frequency, CV-2981(P)/FSC, Circuit Card Assembly (A1) (Sheet 2 of 2).

SECTION II

TM 11-5805-610-24P/TO 31W2-4-252-4

(A) QUANTITY		(B)	(C)	(D)	(E)	(F) DESCRIPTION	(G) USABLE QTY CODE	(H) U/M	(I) QTY IN UNIT
REQ NO.	ITEM NO.	QTY CODE	NATIONAL STOCK NUMBER	PART NUMBER	PCSN				
3	1	PAF22	5910-00-012-2760	CR068104K	01340	CAPACITOR, FIXED, CERAMIC	900	EA	2
3	2	PAF22	5910-00-124-0120	CR068147K	01340	CAPACITOR, FIXED, CERAMIC	900	EA	1
3	3	PAF22	5910-00-400-4924	CR068147K	01340	CAPACITOR, FIXED, CERAMIC	900	EA	1
3	4	PAF22	5910-00-177-4300	15004757000003	56200	CAPACITOR, FIXED, ELECTROLYTIC	900	EA	1
3	5	PAF22	5910-00-496-7007	CR068124K	01340	CAPACITOR, FIXED, CERAMIC	900	EA	1
3	6	PAF22	5961-00-000-4700	1M4002	00131	SEMICONDUCTOR DEVICE, DIODE	900	EA	4
3	7	PAF22	5961-00-912-0000	2M400A	00131	TRANSISTOR	900	EA	2
3	8	PAF22	5961-00-628-6721	2M400	00713	TRANSISTOR	900	EA	1
3	9	PAF22	5905-00-185-7769	RCR070224J5	01340	RESISTOR, FIXED, COMPOSITION	900	EA	5
3	10	PAF22	5905-00-115-6588	RCR070104J5	01340	RESISTOR, FIXED, COMPOSITION	900	EA	2
3	11	PAF22	5905-00-116-6556	RCR070223J5	01340	RESISTOR, FIXED, COMPOSITION	900	EA	1
3	12	PAF22	5965-00-119-3504	RCR070273J5	01340	RESISTOR, FIXED, COMPOSITION	900	EA	2
3	13	PAF22	5985-00-114-8554	RCR070105J5	01340	RESISTOR, FIXED, COMPOSITION	900	EA	2
3	14	PAF22	5905-00-314-6553	RCR070153J5	01340	RESISTOR, FIXED, COMPOSITION	900	EA	2
3	15	PAF22	5805-00-126-3666	RCR070103J5	01340	RESISTOR, FIXED, COMPOSITION	900	EA	2
3	16	PAF22	5935-00-151-1255	RCR070122J5	01340	RESISTOR, FIXED, COMPOSITION	900	EA	1
3	17	PAF22	5985-00-623-5347	RM4003420F	01340	RESISTOR, FIXED, FILM	900	EA	1
3	18	PAF22	5905-00-869-5854	RM4001620F	01340	RESISTOR, FIXED, FILM	900	EA	1
3	19	PAF22	5985-00-369-6397	RM4003740F	01340	RESISTOR, FIXED, FILM	900	EA	1
3	20	PAF22	5961-00-050-8563	1M470A	00713	SEMICONDUCTOR DEVICE, DIODE	900	EA	1
3	21	PAF22	5561-00-685-1272	1M470B	00713	SEMICONDUCTOR DEVICE, DIODE	900	EA	1
3	22	PAF22	5540-00-692-4849	30127C01	01340	TERMINAL, STUD	900	EA	10
3	23	PAF22		297-12095-1	40099	PRINTED WIRING BOARD	900	EA	1

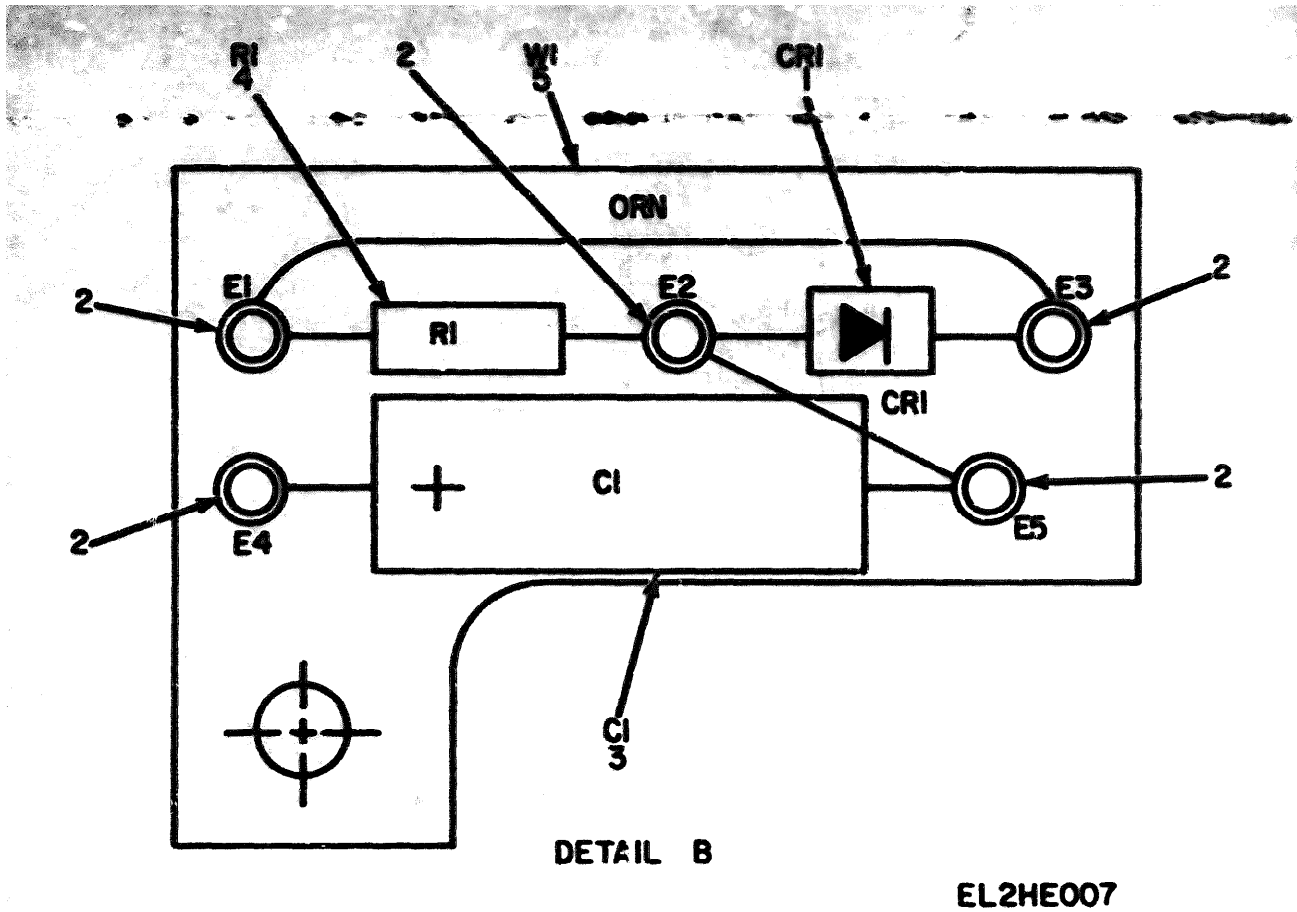


Figure 4. Converter, Signal Frequency, CV-2981(P)/FSC, Circuit Card Assembly (A2).

ILLUSTRATION		(2)	(3)	(4)	(5)	(6)	(7)	(8)
FIG NO	ITEM NO	SAB CODE	NATIONAL STOCK NUMBER	PART NUMBER	FSCN	DESCRIPTION	USABLE ON CODE	QTY INC IN UNIT
4	1	PAF22	9901-00-080-4702	1N4002	60121	SEMICONDUCTOR DEVICE, DIODE	90+	EA 1
4	2	PAF22	5940-00-682-4861	SE12R04	61349	TERMINAL, STUD	90+	EA 5
4	3	PAF22	5910-00-421-8269	150216499050R2	56200	CAPACITOR, FIXED, ELECTROLYTIC	90M	EA 1
4	4	PAF22	5969-00-198-1357	RCR0705F1J5	61340	RESISTOR, FIXED, COMPOSITION	90+	EA 1
4	5	NDP22		398-13050-2	44059	PRINTED WIRING BOARD	90P	EA 1

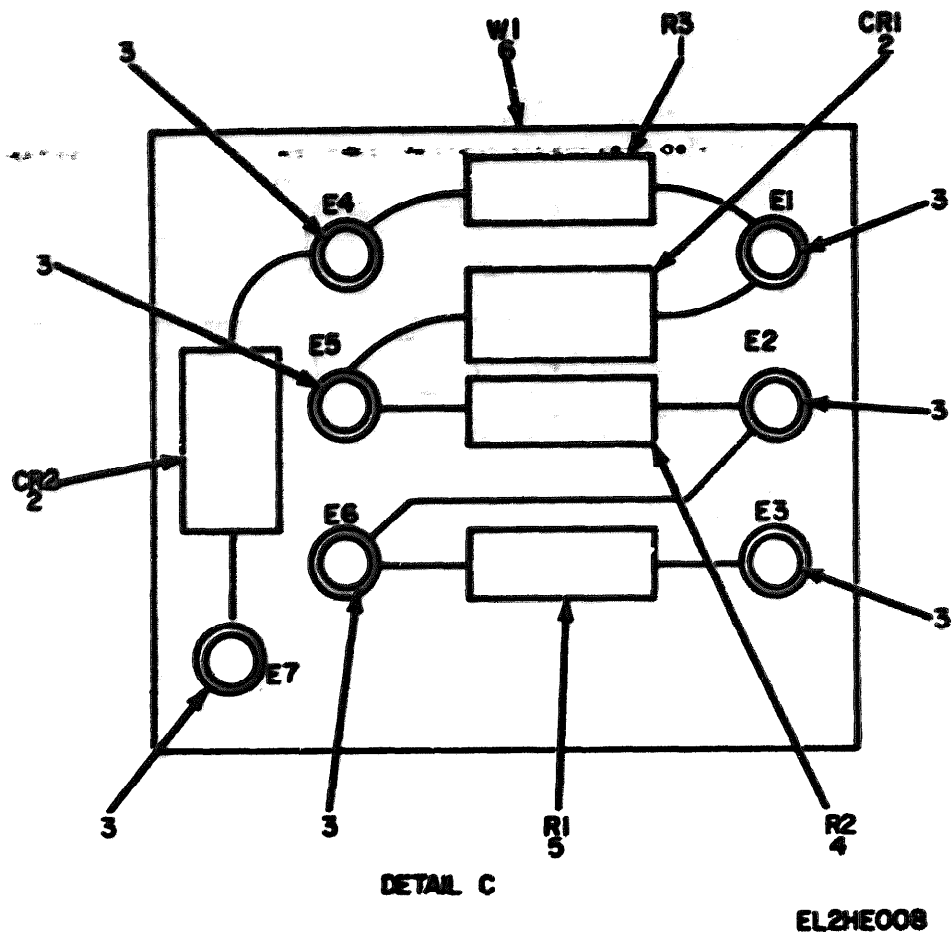
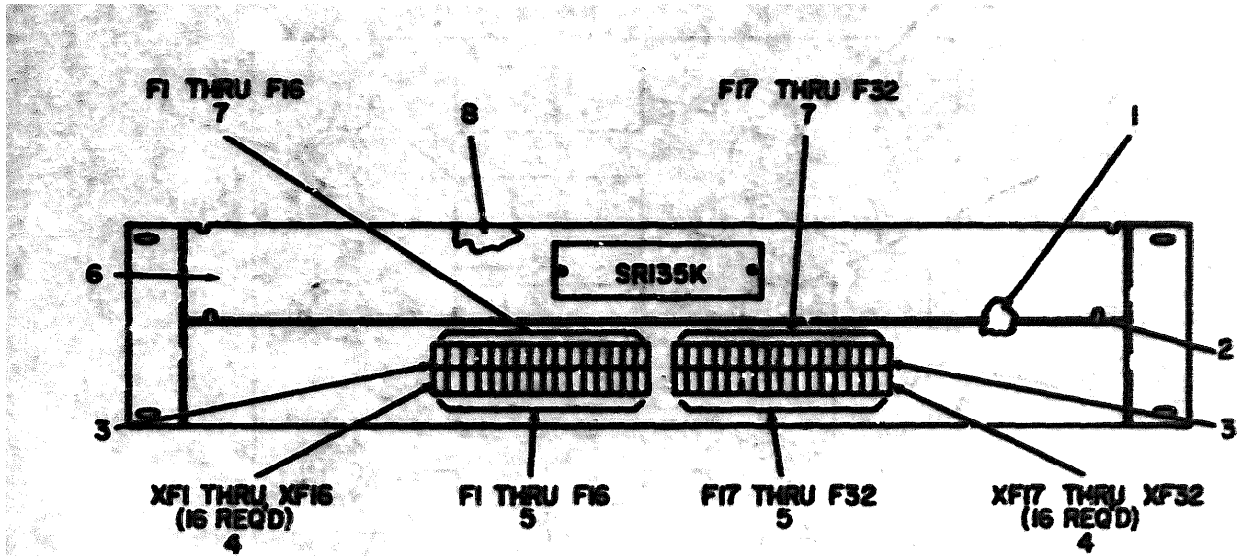


Figure 5. Converter, Signal Frequency, CV-2981(P)/FSC, Circuit Card Assembly (A3).

QTY	DESCRIPTION	USABLE ON CODE	QTY	UNIT	FSCN	PART NUMBER	NATIONAL STOCK NUMBER	SAMP CODE	PAPZZ	ILLUSTRATION	
										FIG NO	FIG NO
9	RESISTOR, FIXED, COMPOSITION	95M	EA	1	01249	RCR070333JS	9403-00-110-4050		1	PAPZZ	
9	SEMICONDUCTOR DEVICE, DIODE	90M	EA	2	00131	1N456A	9401-00-002-6734		2	PAPZZ	
9	TERMINAL, STUD	94P	EA	7	01249	SB12K04	9440-00-002-4061		3	PAPZZ	
9	RESISTOR, FIXED, COMPOSITION	95M	EA	1	01249	RCR070224JS	9403-00-109-1705		4	PAPZZ	
9	RESISTOR, FIXED, COMPOSITION	95P	EA	1	01219	RCR070104JS	9403-00-110-0300		5	PAPZZ	
9	PRINTED WIRING BOARD	95P	EA	1	44000	390-13000-2			6	XBPZZ	



EL2HE009

Figure 6. Indicator-Fuse Assembly ID-1849/FSC (Telesignal SR135K).

(1) ILLUSTRATION		(2)	(3)	(4)	(5)	(6) DESCRIPTION	(7)	(8)
FIG. NO.	ITEM NO.	BAR CODE	NATIONAL STOCK NUMBER	PART NUMBER	FOUN	UTABLE ON CODE	QTY	OR IN UNIT
GROUP 00						INDICATOR-FUSE ASSEMBLY ID-1849/FSC (TELE SIGNAL SR135K)		
6	1	20P22		2P200-21	10241	CHASSIS, ELECTRICAL EQUIPMENT	AV2	EA 1
6	2	20P22		50470	10241	BRACKET, ANGLE	AV2	EA 1
6	3	20P22		50272-22	10241	BAR, FUSEHOLDER	AV2	EA 2
6	4	20P22	9920-00-040-0230	42V	71400	FUSEHOLDER	AV2	EA 32
6	5	20P22	9120-00-037-0417	0NT5	71400	FUSE, CARTRIDGE	AV2	EA 32
6	6	20P22		50270001	10241	PANEL, FRONT	AV2	EA 1
6	7	20P22	9920-00-995-0270	0NT5-2	71400	FUSE, INDICATOR ALARM	AV2	EA 32
6	8	20P22		04209-25	10241	PANEL, BLANK	AV2	EA 1

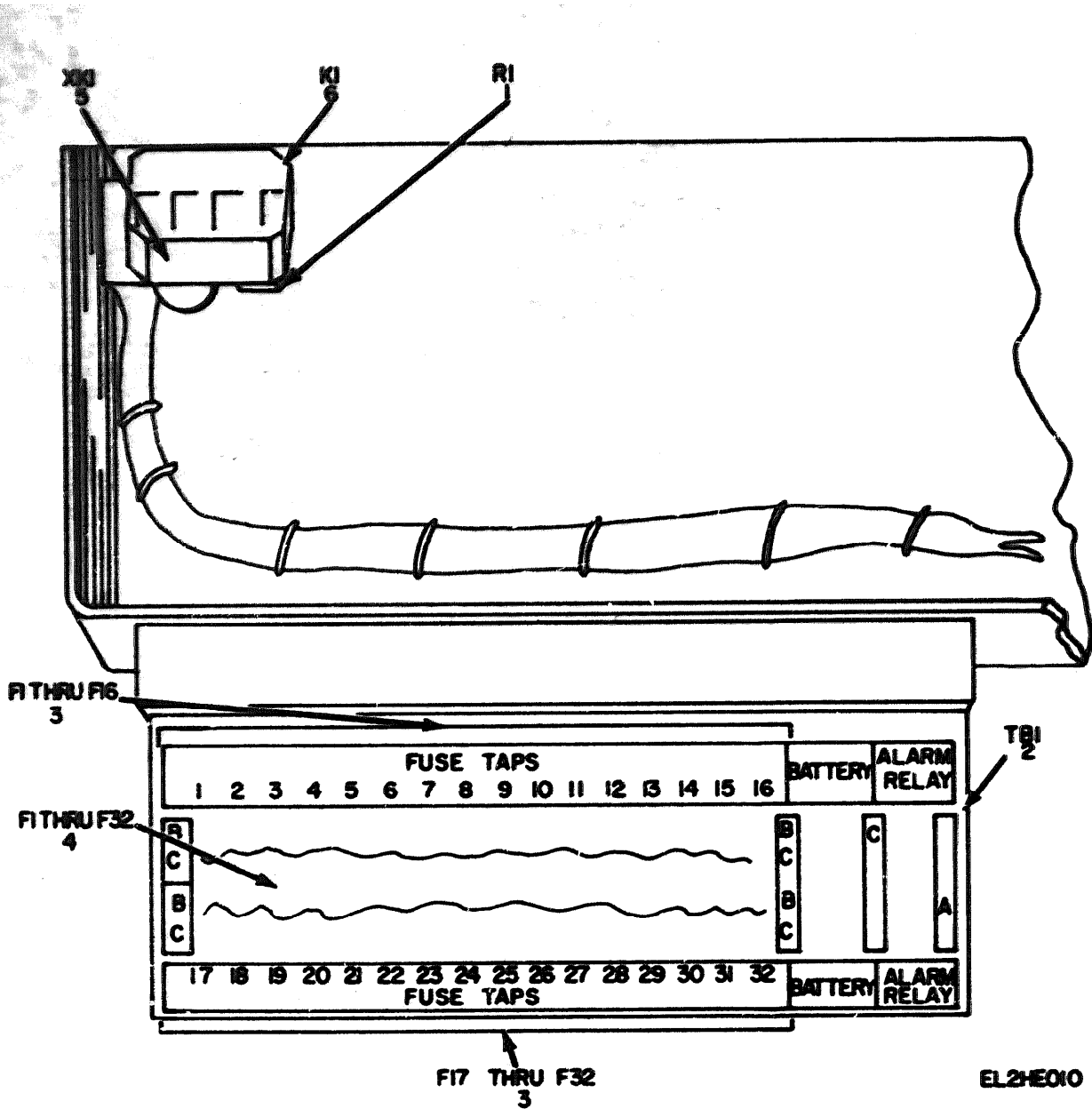
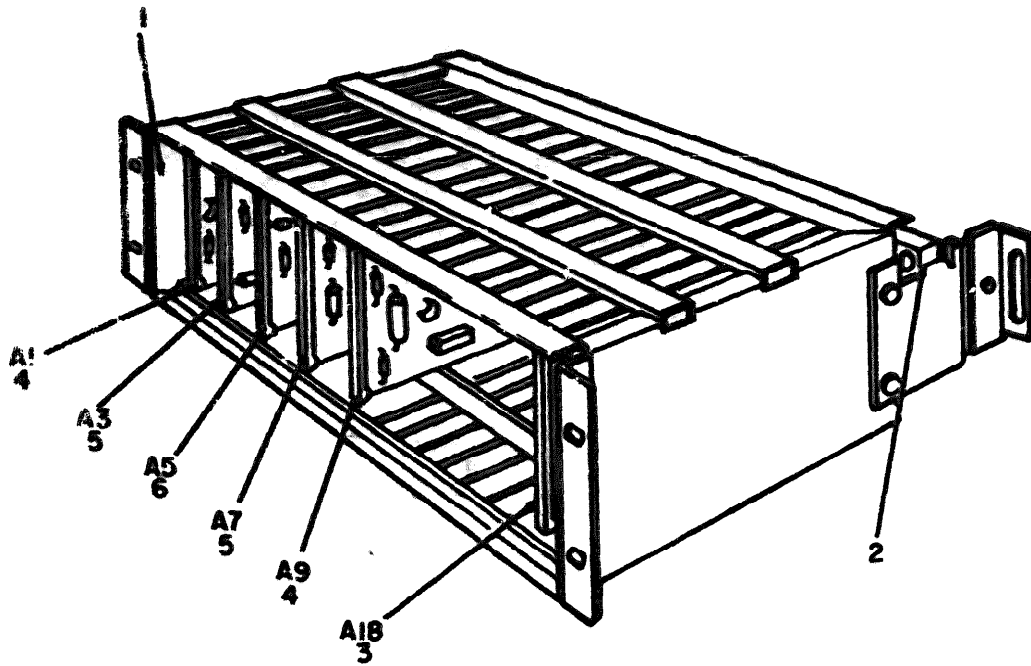


Figure 7. Indicator-Fuse Assembly ID-1849/FSC (Telesignal SR135K), Fuseholder View.

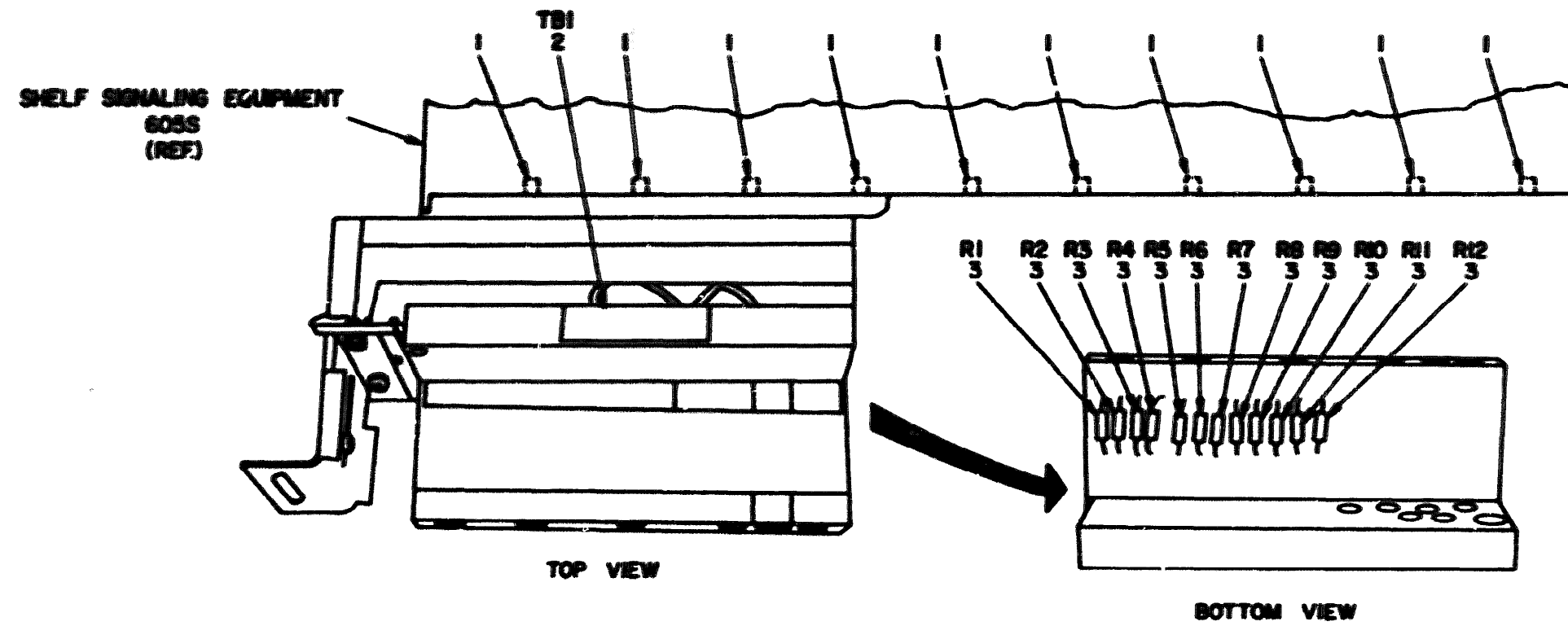
(1) ILLUSTRATION		(2)	(3)	(4)	(5)	(6) DESCRIPTION	(7) USABLE ON CODE	(8) U/M	(9) QTY PER UNIT
FIG NO.	ITEM NO.	SPR CODE	NATIONAL STOCK NUMBER	PART NUMBER	FCM				
7	1	XDFZ		24082025	56209	RESISTOR, FIXED, WIRE WOUND	AV2	EA	1
7	2	PAFZZ	5940-00-651-2719	PJ104	30874	VERNERAL BOARD	AV2	EA	1
7	3	PAQZZ	5920-00-657-8416	QNT1-33	71400	FUSE, CARTRIDGE	AV2	EA	32
7	4	PAQZZ	5920-00-697-8933	QNT2	71400	FUSE, CARTRIDGE	AV2	EA	32
7	5	PAFZZ	5935-00-030-6348	3D099-2	70309	SOCKET, RELAY	AV2	EA	1
7	6	PAFZZ	5945-00-934-3351	T3194CCCC19-SMAD	02200	RELAY, SOLENOID	AV2	EA	1



EL2HE011

Figure 8. Frequency Supply, Telephone, Signaling TA-876/FSC (Telesignal 2571A).

(1) ILLUSTRATION		(2)	(3)	(4)	(5)	(6) DESCRIPTION	(7)	(8)
CD	ITEM	FORM	NATIONAL	PART	FSCN		U/M	QTY
NO.	NO.	CODE	STOCK	NUMBER				IN
			NUMBER					UNIT
						GROUP 00 FREQUENCY SUPPLY, TELEPHONE, SIGNALING TA-876/FSC (TELESIGNAL 2571A)		
0	1	100744	5075-00-403-0164	1095	10241	SHELF, SIGNAL EQUIPMENT	SCJ	EA 1
0	2	100776		2571A12	10241	TERMINAL SUBASSEMBLY	SDJ	EA 1
0	3	100788	6625-00-430-0045	101004	10241	EXTENDER CARD ASSEMBLY	SCJ	EA 1
0	4	100789	5095-00-444-0185	47A	10241	CIRCUIT CARD ASSEMBLY	SDJ	EA 2
0	5	100790	5095-00-444-0130	2A6	10241	CIRCUIT CARD ASSEMBLY	SCJ	EA 2
0	6	100791	5095-00-444-0180	620A	10241	CIRCUIT CARD ASSEMBLY	SCJ	EA 1



EL2HE012

Figure 9. Shelf, Signaling Equipment (Telesignal 605S).

74		75	76	77	78	79	80	81	82	83	84
QUANTITY	UNIT	NSN CODE	NATIONAL STOCK NUMBER	PART NUMBER	PART	DESCRIPTION	USABLE QTY CODE	MFR	QTY	MFR	UNIT
GROUP 01 SMALL SIGNALING EQUIPMENT (TELEPHONE CODES)											
1	04922	7005-05-125-0200	225-594	02540	PIN, TAPERED, PLATINUM, PLASTIC		SCJ	EA	10		
2	20922	7005-05-710-0230	FJ100	70074	TERMINAL BOARD		SCJ	EA	5		
3	04922	7005-05-110-7420	RESISTOR 0102.15	01344	RESISTOR, FIXED, COMPOSITION		SCJ	EA	15		

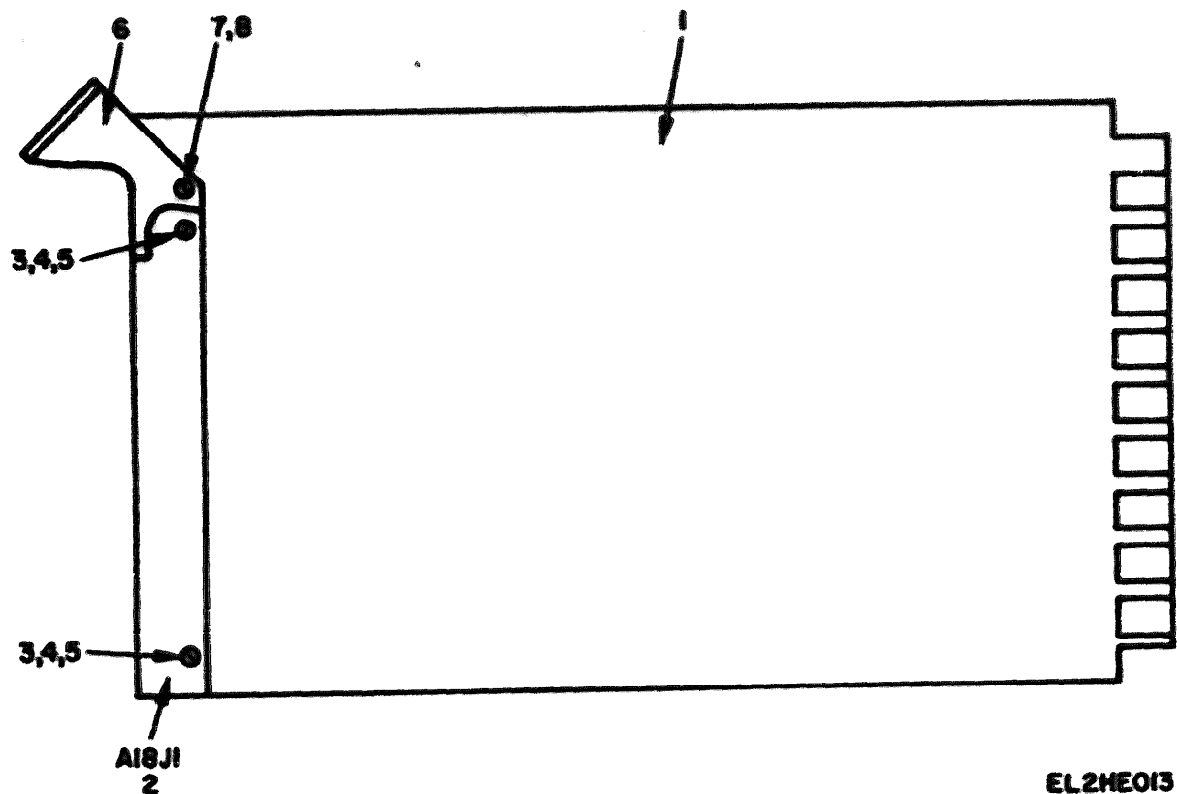


Figure 10. Shelf, Signaling Equipment (Telesignal 605S), Board Extender View.

(1) ILLUSTRATION		(2) QSR CODE	(3) NATIONAL STOCK NUMBER	(4) PART NUMBER	(5) PCOM	(6) DESCRIPTION	(7) QTY	(8) UNIT
FIG NO.	ITEM NO.						REQ IN	OR UNIT
						(TABLE ON EXRN)		
10	1	2DFZ	NC1004-00	10241		EXTENDER, BOARD	SCJ	EA 1
10	2	2AFZ	9735-00-131-0964	88022RD	61312	CONNECTOR, RECEPTACLE, ELECTRICAL	50J	EA 1
10	3	2AFZ	9810-00-930-0740	NS95649-244	90906	NUT, SELF-LOCKING, HEXAGON	SCJ	EA 2
10	4	2AFZ	9810-00-103-7573	NS95313-36	90906	WASHER, LOCK	SCJ	EA 2
10	5	2AFZ	9809-00-983-4730	NS95206-710	90906	SCREW, MACHINE	50J	EA 2
10	6	2AFZ	9099-00-350-2440	NC1004-74	10241	EJECTOR, BOARD	SCJ	EA 1
10	7	2AFZ	9710-00-606-0217	92207M40	72962	NUT, SELF-LOCKING, HEXAGON	50J	EA 1
10	8	2AFZ	9309-00-984-4970	NS95206-219	90906	SCREW, MACHINE	SCJ	EA 1

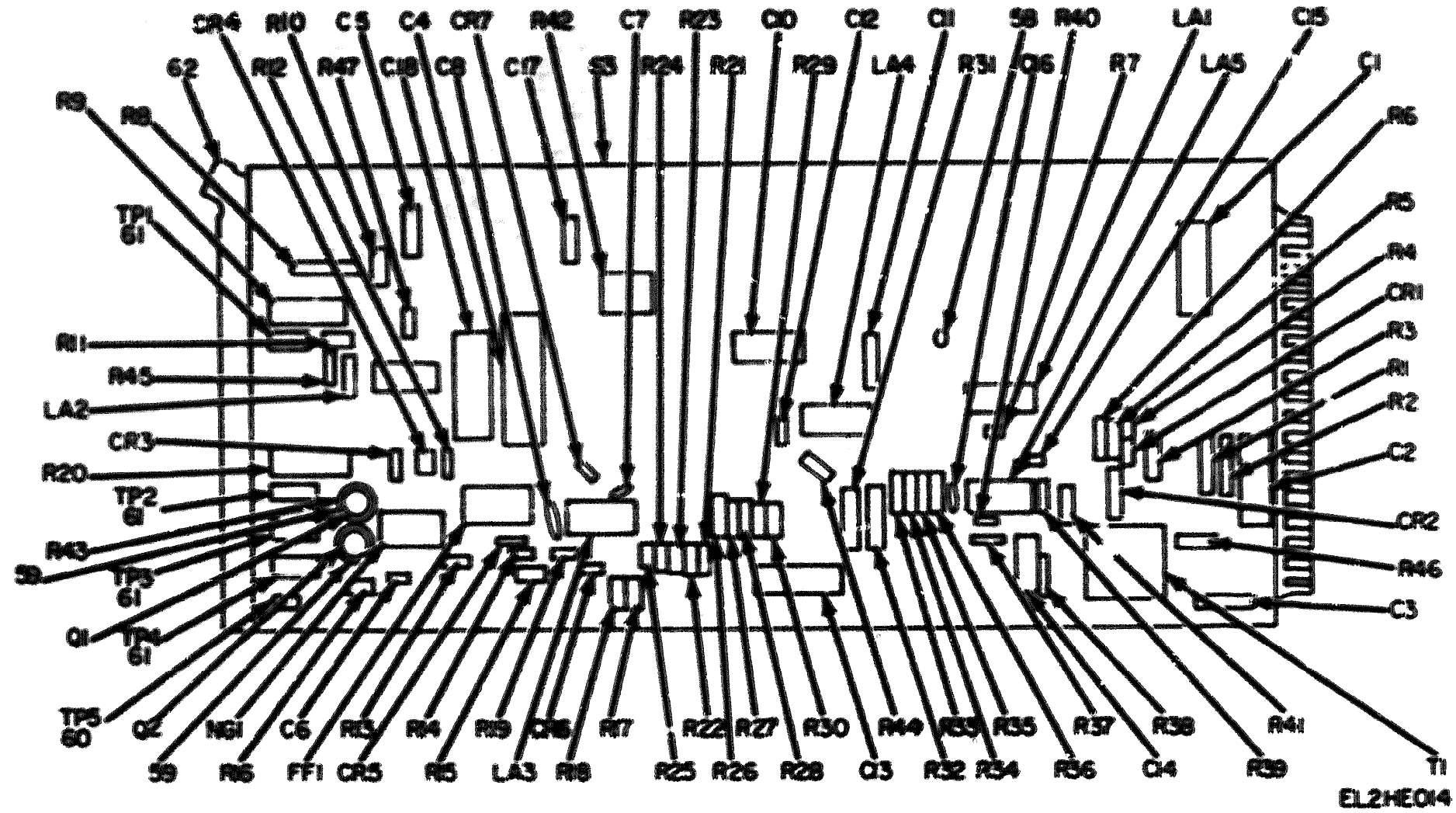


Figure 11. Circuit Card Assembly, AM Tone Keyer (Telesignal 47A)
(Sheet 1 of 2).

REF. DES.	ITEM NO.	REF. DES.	ITEM NO.	REF. DES.	ITEM NO.	REF. DES.	ITEM NO.	REF. DES.	ITEM NO.	REF. DES.	ITEM NO.	REF. DES.	ITEM NO.	REF. DES.	ITEM NO.
C1	1	C13	11	CR6	17	R1	22	R12	31	R23	40	R34	41	R45	55
C2	1	C14	12	CR7	18	R2	22	R13	32	R24	41	R35	40	R46	56
C3	2	C15	13	FF1	18	R3	23	R14	33	R25	42	R36	39	R47	50
C4	3	C16	14	LA1	19	R4	24	R15	34	R26	43	R37	38	T1	57
C5	4	C17	4	LA2	19	R5	24	R16	35	R27	44	R38	50		
C6	5	C18	15	LA3	19	R6	25	R17	36	R28	45	R39	51		
C7	6	CR1	16	LA4	19	R7	26	R18	34	R29	46	R40	34		
C8	7	CR2	16	LA5	19	R8	27	R19	34	R30	47	R41	52		
C10	8	CR3	16	NG1	20	R9	28	R20	37	R21	48	R42	53		
C11	9	CR4	16	Q1	21	R10	29	R21	38	R32	49	R43	54		
C12	10	CR5	17	Q2	21	R11	30	R22	39	R33	42	R44	34		

EL2HE015

Figure 11. Circuit Card Assembly, AM Tone Keyer (Telesignal 47A) (Sheet 2 of 2).

QUANTITY		QTY REQ IN UNIT	DESCRIPTION	QTY REQ IN UNIT				
REQ NO.	REQ NO.							
GROUP 02 CIRCUIT CARD ASSEMBLY, AN TONE NEVER (TELEVISION 4TA)								
11	1 PANZZ	5910-00-826-1414	TE1104	56200	CAPACITOR, FIXED, ELECTROLYTIC	SCJ	EA	3
12	2 PANZZ	5919-956-6741	CE013F9MKS	61340	CAPACITOR, FIXED, ELECTROLYTIC	SCJ	EA	1
13	3 PANZZ	5920-00-147-0698	TEP2021K2	10241	CAPACITOR, FIXED, PLASTIC	SCJ	EA	1
14	4 PANZZ	5910-00-727-6260	CE18201JES	61340	CAPACITOR, FIXED, MICA	SCJ	EA	2
15	5 PANZZ	5910-00-656-1167	CE18201JES	72134	CAPACITOR, FIXED, MICA	SCJ	EA	1
16	6 PANZZ	5910-00-147-6765	CE01750-10PCT	91410	CAPACITOR, FIXED, CERAMIC	SCJ	EA	1
17	7 PANZZ	5910-00-421-8788	CE01750-10PCT	91410	CAPACITOR, FIXED, CERAMIC	SCJ	EA	1
18	8 PANZZ	5910-00-284-8914	TEP2021K2	10241	CAPACITOR, FIXED, PLASTIC	SCJ	EA	1
19	9 PANZZ	5910-00-681-1737	CE01750-10PCT	91410	CAPACITOR, FIXED, CERAMIC	SCJ	EA	1
20	10 PANZZ	5910-00-084-1434	TEP2021K2	91410	CAPACITOR, FIXED, CERAMIC	SCJ	EA	1
21	11 PANZZ	5910-00-147-0698	TEP2021K2	10241	CAPACITOR, FIXED, PLASTIC	SCJ	EA	1
22	12 PANZZ	5910-00-681-1737	CE01750-10PCT	14495	CAPACITOR, FIXED, PLASTIC	SCJ	EA	1
23	13 PANZZ	5910-00-685-8884	JF220-10PCT	91410	CAPACITOR, FIXED, CERAMIC	SCJ	EA	1
24	14 PANZZ	5910-00-620-6864	JF470-10PCT	91410	CAPACITOR, FIXED, CERAMIC	SCJ	EA	1
25	15 PANZZ	5910-00-146-8998	TEP2021K2	10241	CAPACITOR, FIXED, PLASTIC	SCJ	EA	1
26	16 PANZZ	5961-00-800-6711	1N455A	99100	SEMICONDUCTOR DEVICE, DIODE	SCJ	EA	9
27	17 PANZZ	5941-00-727-3248	1N455A	99100	SEMICONDUCTOR DEVICE, DIODE	SCJ	EA	2
28	18 PANZZ	5942-00-498-8995	IC42A	10241	INTEGRATED CIRCUIT	SCJ	EA	1
29	19 PANZZ	5942-00-223-3338	IC31A	10241	INTEGRATED CIRCUIT	SCJ	EA	9
30	20 PANZZ	5942-00-244-9865	IC45A	10241	INTEGRATED CIRCUIT	SCJ	EA	1
31	21 PANZZ	5941-00-820-9840	2N363	60131	TRANSISTOR	SCJ	EA	2
32	22 PANZZ	5905-00-107-8895	RCR076100JS	61340	RESISTOR, FIXED, COMPOSITION	SCJ	EA	2
33	23 PANZZ	5985-00-819-7709	2C256025	56200	RESISTOR, FIXED, WIRE WOUND	SCJ	EA	1
34	24 PANZZ	5985-00-114-8710	RCR076301JS	61340	RESISTOR, FIXED, COMPOSITION	SCJ	EA	2
35	25 PANZZ	5905-00-116-2394	RCR076311JS	61340	RESISTOR, FIXED, COMPOSITION	SCJ	EA	1
36	26 PANZZ	5905-00-349-6791	RCR076113JS	61340	RESISTOR, FIXED, COMPOSITION	SCJ	EA	1
37	27 PANZZ	5905-00-186-3707	1000P1-200	69260	RESISTOR, VARIABLE	SCJ	EA	1
38	28 PANZZ	5905-00-617-6741	77PR1K	78130	RESISTOR, ADJUSTABLE	SCJ	EA	1
39	29 PANZZ	5905-00-876-8895	242E1005	56200	RESISTOR, FIXED, WIRE WOUND	SCJ	EA	1
40	30 PANZZ	5905-00-876-8895	242E6025	56200	RESISTOR, FIXED, WIRE WOUND	SCJ	EA	1
41	31 PANZZ	5905-00-126-6656	RCR076332JS	61340	RESISTOR, FIXED, COMPOSITION	SCJ	EA	1
42	32 PANZZ	5505-732-3937	RCR0761212F	61340	RESISTOR, FIXED, FILM	SCJ	EA	1
43	33 PANZZ	5905-00-116-6555	RCR076130JS	61340	RESISTOR, FIXED, COMPOSITION	SCJ	EA	1
44	34 PANZZ	5905-00-106-1354	RCR076132JS	61340	RESISTOR, FIXED, COMPOSITION	SCJ	EA	9
45	35 PANZZ	5905-00-114-0711	RCR076472JS	61340	RESISTOR, FIXED, COMPOSITION	SCJ	EA	1
46	36 PANZZ	5905-00-191-9729	RCR076302JS	61340	RESISTOR, FIXED, FILM	SCJ	EA	1
47	37 PANZZ	5929-00-121-9877	77PR5K	78130	RESISTOR, VARIABLE	SCJ	EA	1

SECTION II

TM 11-5805-610-24P/TO 31W2-4-252-4

UNCLASSIFIED		ORG	NATIONAL STOCK NUMBER	PART NUMBER	FORM	DESCRIPTION	USABLE ON CODE	QTY	UNIT
(1)	(2)								
REQ NO.	ITEM NO.	ORG CODE							
11	34	PANZZ	5905-00-121-5938	RCR076753JS	01340	RESISTOR, FIXED, COMPOSITION	50J	EA	2
11	34	PANZZ	5905-00-111-1681	RCR076134JS	01340	RESISTOR, FIXED, COMPOSITION	50J	EA	2
11	40	PANZZ	5905-00-156-5890	RCR076113J	01340	RESISTOR, FIXED, COMPOSITION	50J	EA	2
11	40	PANZZ	5905-00-141-1295	RCR076248JS	01340	RESISTOR, FIXED, COMPOSITION	50J	EA	2
11	40	PANZZ	5905-00-124-8345	RCR076128JS	01340	RESISTOR, FIXED, COMPOSITION	50J	EA	2
11	40	PANZZ	5905-00-184-8364	RCR076362JS	01340	RESISTOR, FIXED, COMPOSITION	50J	EA	1
11	40	PANZZ	5905-00-826-5504	RCR076422JS	01340	RESISTOR, FIXED, COMPOSITION	50J	EA	1
11	40	PANZZ	5935-00-136-8484	RCR076362JS	01340	RESISTOR, FIXED, COMPOSITION	50J	EA	1
11	40	PANZZ	5905-00-184-8362	RCR076122JS	01340	RESISTOR, FIXED, COMPOSITION	50J	EA	1
11	41	PANZZ	3905-00-136-3692	RCR076421JS	01340	RESISTOR, FIXED, COMPOSITION	50J	EA	1
11	40	PANZZ	5905-00-649-1017	RM12C1022F	01340	RESISTOR, FIXED, FILM	50J	EA	1
11	40	PANZZ	5905-00-682-0214	RM12C1003F	01340	RESISTOR, FIXED, FILM	50J	EA	1
11	50	PANZZ	5905-00-186-3666	RCR076103JS	01340	RESISTOR, FIXED, COMPOSITION	50J	EA	2
11	51	PANZZ	5505-00-122-6664	RCR076435JS	01340	RESISTOR, FIXED, COMPOSITION	50J	EA	1
11	52	PANZZ	5905-00-219-6012	RCR076121JS	01340	RESISTOR, FIXED, COMPOSITION	50J	EA	1
11	52	PANZZ	5905-00-403-5634	X201A2300	71450	RESISTOR, VARIABLE	50J	EA	1
11	54	PANZZ	5985-00-141-1143	RCR076101JS	01340	RESISTOR, FIXED, COMPOSITION	50J	EA	1
11	55	PANZZ	5905-00-120-9194	RCR076471JS	01340	RESISTOR, FIXED, COMPOSITION	50J	EA	1
11	56	PANZZ	5985-00-104-5755	RCR200100JS	01340	RESISTOR, FIXED, COMPOSITION	50J	EA	1
11	57	PANZZ	5958-00-419-6434	XA10021	10241	TRANSFORMER, AUDIO FREQUENCY	50J	EA	1
11	58	PANZZ	5940-00-225-5149	1550-2	71270	TERMINAL, STUD	50J	EA	4
11	59	PANZZ		7717-0MMT	13100	INSULATOR, DISK	50J	EA	2
11	60	PANZZ	5935-00-868-2379	105-755	74070	JACK, TIP, BLACK	50J	EA	1
11	61	PANZZ	5935-00-017-2934	105-751	74070	JACK, TIP	50J	EA	4
11	62	PANZZ	5895-00-350-5370	50447	10241	CARD EJECTOR	50J	EA	1
11	63	PANZZ		47AG6	10241	PRINTED WIRING BOARD	50J	EA	1

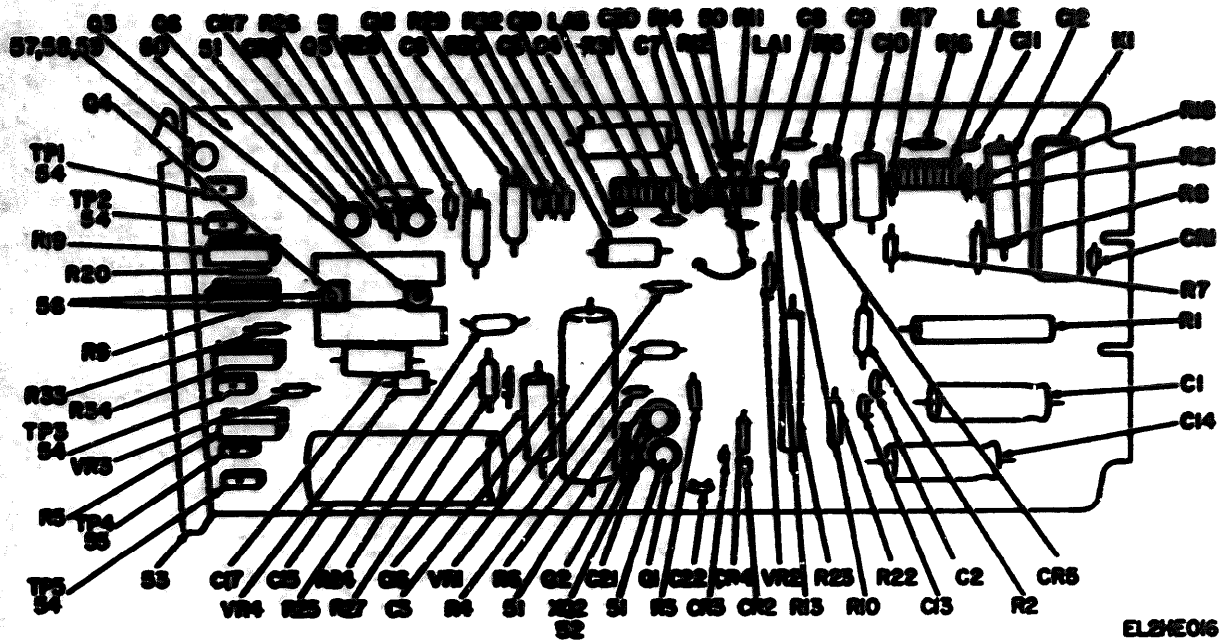


Figure 12. Circuit Card Assembly, Power Amplifier (Telesignal 26A)
(Sheet 1 of 2).

REF. DES.	ITEM NO.	REF. DES.	ITEM NO.	REF. DES.	ITEM NO.	REF. DES.	ITEM NO.	REF. DES.	ITEM NO.	REF. DES.	ITEM NO.	REF. DES.	ITEM NO.
C1	1	C12	4	CR1	17	Q1	22	R6	32	R17	41	R28	38
C2	2	C13	2	CR2	18	Q2	23	R7	33	R18	38	R29	39
C3	3	C14	1	CR3	19	Q3	24	R8	35	R19	42	R30	41
C4	4	C15	10	CR4	18	Q4	25	R9	34	R20	43	R31	38
C5	5	C16	11	CR5	19	Q5	23	R10	35	R21	44	R32	48
C6	5	C17	12	CR6	19	Q6	26	R11	36	R22	45	R33	36
C7	6	C18	13	CR7	18	R1	27	R12	37	R23	27	R34	34
C8	7	C19	14	K1	20	R2	28	R13	38	R24	46	VR1	49
C9	8	C20	15	LA1	21	R3	29	R14	39	R25	46	VR2	49
C10	9	C21	16	LA2	21	R4	30	R15	37	R26	47	VR3	49
C11	7	C22	2	LA3	21	R5	31	R16	40	R27	38	VR4	49

EL2HE017

Figure 12. Circuit Card Assembly, Power Amplifier (Telesignal 26A)
(Sheet 2 of 2).

LINE	QTY	UNIT	PART NUMBER	NATIONAL STOCK NUMBER	DESCRIPTION	ELECTRICAL CODE	U/M	QTY	U/M	QTY	U/M
GROUP 03 CIRCUIT CARD ASSEMBLY, POWER AMPLIFIER (TELEVISION 26A1)											
10	1	PANEL	9910-00-170-7647	TE1111	90299	CAPACITOR, FIXED, ELECTROLYTIC	SCJ	EA	2		
11	2	PANEL	9910-00-910-2010	TE1P020PCT	91410	CAPACITOR, FIXED, CERAMIC	SCJ	EA	3		
12	2	PANEL	9910-00-904-0240	90200-25	14090	CAPACITOR, FIXED, ELECTROLYTIC	SCJ	EA	1		
13	4	PANEL	9910-00-901-0000	9010001	14097	CAPACITOR, FIXED, PLASTIC	SCJ	EA	2		
14	6	PANEL	9910-00-027-1200	TE1102	90299	CAPACITOR, FIXED, ELECTROLYTIC	SCJ	EA	2		
15	6	PANEL	9910-00-113-0240	JF100-10PCT	91410	CAPACITOR, FIXED, CERAMIC	SCJ	EA	1		
16	7	PANEL	9910-00-000-0000	JF220-10PCT	91410	CAPACITOR, FIXED, CERAMIC	SCJ	EA	2		
17	6	PANEL		9010000	14093	CAPACITOR, FIXED, PLASTIC	SCJ	EA	1		
18	6	PANEL		TE1102	90299	CAPACITOR, FIXED, ELECTROLYTIC	SCJ	EA	1		
19	10	PANEL	9910-00-027-1000	901000-25	14093	CAPACITOR, FIXED, ELECTROLYTIC	SCJ	EA	1		
20	10	PANEL	9910-00-029-1000	TE1104	90299	CAPACITOR, FIXED, ELECTROLYTIC	SCJ	EA	1		
21	10	PANEL	9910-00-027-1000	TE1101	90299	CAPACITOR, FIXED, ELECTROLYTIC	SCJ	EA	1		
22	10	PANEL	9910-00-111-0100	TE1100	90299	CAPACITOR, FIXED, ELECTROLYTIC	SCJ	EA	1		
23	14	PANEL	9910-00-000-0010	C400750-10PCT	91410	CAPACITOR, FIXED, CERAMIC	SCJ	EA	1		
24	14	PANEL	9910-00-000-0000	JF020-10PCT	91410	CAPACITOR, FIXED, CERAMIC	SCJ	EA	1		
25	14	PANEL	9910-00-100-0077	JF001-10PCT	91410	CAPACITOR, FIXED, CERAMIC	SCJ	EA	1		
26	17	PANEL	9901-00-000-4700	104002	00131	SEMICONDUCTOR DEVICE, DIODE	SCJ	EA	1		
27	14	PANEL	9901-00-700-7500	10277	00131	SEMICONDUCTOR DEVICE, DIODE	SCJ	EA	3		
28	14	PANEL	9901-00-000-0711	10400A	00100	SEMICONDUCTOR DEVICE, DIODE	SCJ	EA	3		
29	24	PANEL	9905-00-100-0000	101010	10201	RELAY, JARATURE	SCJ	EA	1		
30	21	PANEL	9905-00-220-2000	1051A	10201	INTEGRATED CIRCUIT	SCJ	EA	3		
31	71	PANEL	9901-00-070-0000	20040	00131	TRANSISTOR	SCJ	EA	1		
32	21	PANEL	9901-00-700-0100	20007	00131	TRANSISTOR	SCJ	EA	2		
33	24	PANEL	9901-00-010-0000	200010	00713	TRANSISTOR	SCJ	EA	1		
34	21	PANEL	9901-00-020-0700	040021	00713	TRANSISTOR	SCJ	EA	1		
35	24	PANEL	9901-00-010-0000	200000A	00131	TRANSISTOR	SCJ	EA	1		
36	27	PANEL	9905-00-000-0000	040010	90209	RESISTOR, FIXED, WIRE WOUND	SCJ	EA	2		
37	24	PANEL	9905-00-100-1000	040000	90209	RESISTOR, FIXED, WIRE WOUND	SCJ	EA	1		
38	20	PANEL	9905-00-100-0070	00070000JS	01300	RESISTOR, FIXED, COMPOSITION	SCJ	EA	1		
39	24	PANEL	9905-00-000-0000	040010	90209	RESISTOR, FIXED, WIRE WOUND	SCJ	EA	1		
40	31	PANEL	9905-00-100-7000	7700200	73130	RESISTOR, VARIABLE	SCJ	EA	1		
41	32	PANEL	9905-00-110-1000	00070000JS	01300	RESISTOR, FIXED, COMPOSITION	SCJ	EA	1		
42	30	PANEL	9905-00-100-0700	00000100JS	01300	RESISTOR, FIXED, COMPOSITION	SCJ	EA	2		
43	34	PANEL	9905-00-110-1000	7700100	73130	RESISTOR, VARIABLE	SCJ	EA	2		
44	31	PANEL	9905-00-100-0000	00070000JS	01300	RESISTOR, FIXED, COMPOSITION	SCJ	EA	1		
45	34	PANEL	9905-00-100-0000	00070100JS	01300	RESISTOR, FIXED, COMPOSITION	SCJ	EA	2		
46	37	PANEL	9905-00-110-0000	00070100JS	01300	RESISTOR, FIXED, COMPOSITION	SCJ	EA	2		
47	34	PANEL	9905-00-100-1000	00070100JS	01300	RESISTOR, FIXED, COMPOSITION	SCJ	EA	3		

QUANTITY		UNIT	NATIONAL STOCK NUMBER	PART NUMBER	QTY	DESCRIPTION	USABLE GSN CODE	UNIT	QTY
REQ	AVAIL								
12	20	PANEE	5905-00-110-0810	RES070131J5	01340	RESISTOR, FIXED, COMPOSITION	5CJ	EA	2
12	40	PANEE	5905-00-110-0820	RES070132J5	01340	RESISTOR, FIXED, COMPOSITION	5CJ	EA	1
12	40	PANEE	5905-00-110-0830	RES070133J5	01340	RESISTOR, FIXED, COMPOSITION	5CJ	EA	2
12	40	PANEE	5905-00-111-0790	77025X	70130	RESISTOR, VARIABLE	5CJ	EA	1
12	40	PANEE	5905-00-110-0710	RES070472J5	01340	RESISTOR, FIXED, COMPOSITION	5CJ	EA	1
12	40	PANEE	5905-00-125-0130	RES070471J5	01340	RESISTOR, FIXED, COMPOSITION	5CJ	EA	1
12	40	PANEE	5905-00-100-1070	24201005	70200	RESISTOR, FIXED, WIRE WOUND	5CJ	EA	1
12	40	PANEE	5905-00-007-0700	24201005	70200	RESISTOR, FIXED, WIRE WOUND	5CJ	EA	2
12	40	PANEE		24201005	70200	RESISTOR, FIXED, WIRE WOUND	5CJ	EA	1
12	40	PANEE	5905-00-100-7760	RES070501J5	01340	RESISTOR, FIXED, COMPOSITION	5CJ	EA	1
12	40	PANEE	5905-00-400-1060	MS0400	00131	SEMICONDUCTOR DEVICE, DIODE	5CJ	EA	4
12	50	PANEE	5940-00-030-0140	1950-2	71270	TERMINAL, STUD	50J	EA	9
12	50	PANEE	5900-00-000-7007	7717-4MM0T	13100	INSULATOR, DISK	50J	EA	4
12	50	PANEE	5900-00-700-0700	770702-0250	00072	HEAT SINK	5CJ	EA	1
12	50	PANEE	5900-00-000-0070	50447	10041	CARD EJECTOR	50J	EA	1
12	50	PANEE	5935-00-017-0300	105-751	74070	JACK, VIF	50J	EA	4
12	50	PANEE	5935-00-105-0040	105-750	74070	JACK, VIF	5CJ	EA	1
12	50	PANEE		WV04-040	00230	WASHER, ENCLOSED, NONMETALLIC	5CJ	EA	2
12	50	PANEE	5910-00-004-0740	MS05649-344	04000	NUT, FLANG, HEXAGON	5CJ	EA	2
12	50	PANEE	5905-00-004-0050	MS01957-17	02000	SCREW, MACHINE	50J	EA	2
12	50	PANEE	5910-00-005-0210	MS19795-003	00000	WASHER, FLAT	5CJ	EA	2
12	60	PANEE		20400	10241	PRINTED WIRING BOARD	50J	EA	1

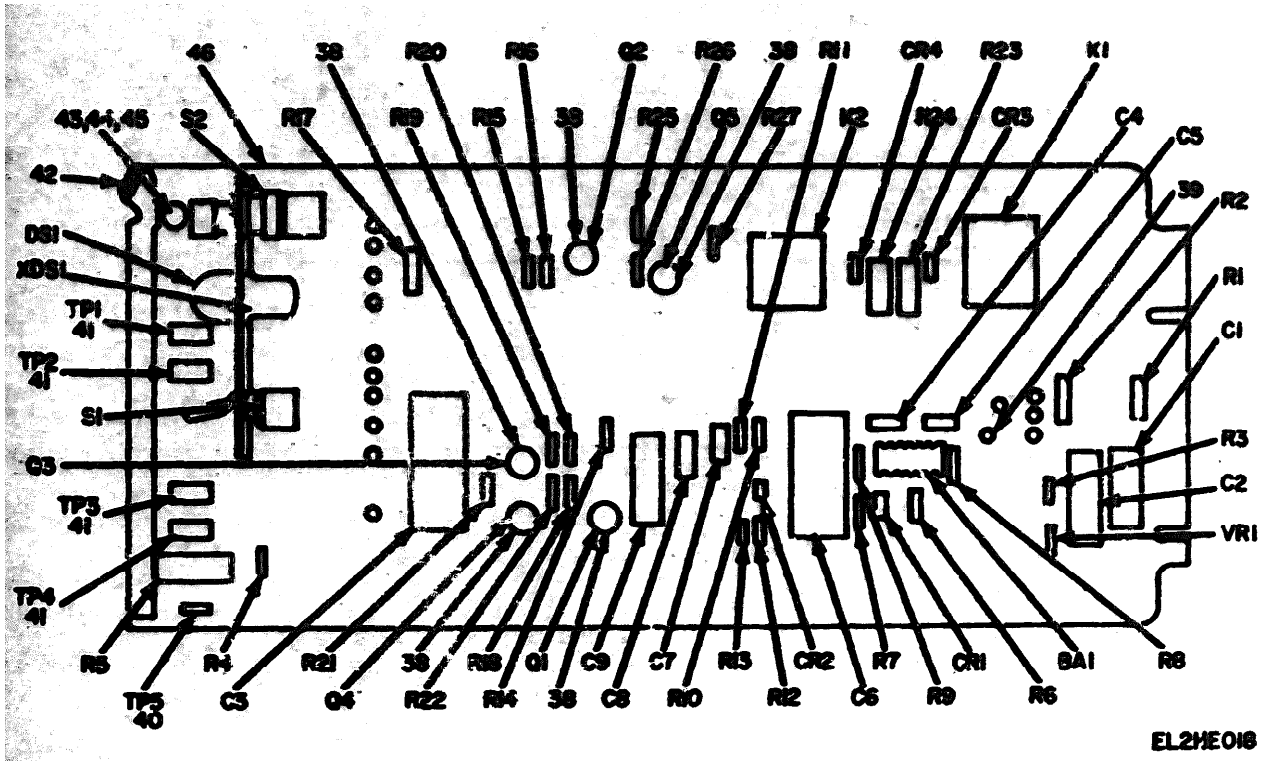


Figure 13. Circuit Card Assembly, Transfer and Alarm (Telesignal 62BA)
(Sheet 1 of 2).

REF DES.	ITEM NO.	REF DES.	ITEM NO.	REF DES.	ITEM NO.	REF DES.	ITEM NO.	REF DES.	ITEM NO.	REF DES.	ITEM NO.	REF DES.	ITEM NO.	REF DES.	ITEM NO.
BA1	1	C7	8	DB1	15	Q5	15	R7	21	R14	27	R21	31	S1	34
C1	2	C8	9	K1	14	R1	16	R8	22	R15	28	R22	17	S2	35
C2	3	C9	10	K2	14	R2	16	R9	23	R16	27	R23	32	VRI	36
C3	4	CR1	11	Q1	15	R3	17	R10	24	R17	29	R24	32	XDS1	37
C4	5	CR2	12	Q2	15	R4	18	R11	25	R18	30	R25	30		
C5	6	CR3	11	Q3	15	R5	19	R12	17	R19	31	R26	31		
C6	7	CR4	11	Q4	15	R6	20	R13	26	R20	30	R27	33		

EL2HE019

Figure 13. Circuit Card Assembly, Transfer and Alarm (Telesignal 62BA)
(Sheet 2 of 2).

CLASSIFICATION		QTY REQ IN KIT	QTY REQ IN UNIT	DESCRIPTION	QTY REQ IN KIT	QTY REQ IN UNIT			
NSN	QTY REQ IN KIT								
QTY REQ IN KIT	QTY REQ IN UNIT	QTY REQ IN KIT	QTY REQ IN UNIT	DESCRIPTION	QTY REQ IN KIT	QTY REQ IN UNIT			
GROUP 04 LOGIC CARD ASSEMBLY, TRANSFER AND ALARM (TELEPHONE, 4004)									
13	1	PAGEZ	9045-00-220-2300	AL51A	10041	EMERGENCY CONTACT	SCJ	EA	1
13	2	PAGEZ	9010-00-027-1200	TE1162	90200	CAPACITOR, FILM, ELECTROLYTIC	SCJ	EA	1
13	1	PAGEZ	9010-00-070-0123	TE1207	90200	CAPACITOR, FILM, ELECTROLYTIC	SCJ	EA	1
13	4	PAGEZ	9010-00-037-7000	WPF101	10050	CAPACITOR, FILM, PLASTIC	SCJ	EA	1
13	1	PAGEZ	9010-00-100-0471	WFOH-10PCT	90410	CAPACITOR, FILM, CERAMIC	SCJ	EA	1
13	4	PAGEZ	9010-00-004-0070	C100W70-10PCT	90410	CAPACITOR, FILM, CERAMIC	SCJ	EA	1
13	1	PAGEZ	9010-00-000-0000	WPH001	10050	CAPACITOR, FILM, PLASTIC	SCJ	EA	1
13	0	PAGEZ	9010-00-777-0010	WPF002	10050	CAPACITOR, FILM, PLASTIC	SCJ	EA	1
13	0	XXXX		TE1007	90200	CAPACITOR, FILM, ELECTROLYTIC	SCJ	EA	1
13	14	XXXX		TE1100	90200	CAPACITOR, FILM, ELECTROLYTIC	SCJ	EA	1
13	10	PAGEZ	9041-00-000-0710	1M400A	90100	SEMICONDUCTOR DEVICE, DIODE	SCJ	EA	3
13	10	PAGEZ	9041-00-707-0300	1M4000	90100	SEMICONDUCTOR DEVICE, DIODE	SCJ	EA	1
13	10	PAGEZ	0040-00-000-0300	045	00000	LAMP, FLUORESCENT	SCJ	EA	1
13	14	PAGEZ	9045-00-004-0020	AB04040120	70170	RELAY, ARMATURE	SCJ	EA	2
13	10	PAGEZ	9041-00-070-0047	00040	00101	TRANSISTOR	SCJ	EA	9
13	14	PAGEZ	9005-00-100-0700	RCR070100J5	01040	RESISTOR, FIXED, COMPOSITION	SCJ	EA	2
13	17	PAGEZ	9005-00-100-7700	RCR070000J5	01040	RESISTOR, FIXED, COMPOSITION	SCJ	EA	3
13	10	PAGEZ	9005-00-140-0700	RCR070040J5	01040	RESISTOR, FIXED, COMPOSITION	SCJ	EA	1
13	14	PAGEZ	9005-00-140-0020	770020	70100	RESISTOR, VARIABLE	SCJ	EA	1
13	20	PAGEZ	9005-00-110-0710	RCR070001J5	01040	RESISTOR, FIXED, COMPOSITION	SCJ	EA	1
13	21	PAGEZ	9005-00-120-0020	RCR070000J5	01040	RESISTOR, FIXED, COMPOSITION	SCJ	EA	1
13	22	PAGEZ	9005-00-120-0100	RCR070001J5	01040	RESISTOR, FIXED, COMPOSITION	SCJ	EA	1
13	25	PAGEZ	9005-00-100-1700	RCR070100J5	01040	RESISTOR, FIXED, COMPOSITION	SCJ	EA	1
13	24	PAGEZ	9005-00-110-0010	RCR070101J5	01040	RESISTOR, FIXED, COMPOSITION	SCJ	EA	1
13	25	PAGEZ	9005-00-110-7020	RCR070102J5	01040	RESISTOR, FIXED, COMPOSITION	SCJ	EA	1
13	26	PAGEZ	9005-00-110-0000	RCR070000J5	01040	RESISTOR, FIXED, COMPOSITION	SCJ	EA	1
13	27	PAGEZ	9005-00-140-1100	RCR070101J5	01040	RESISTOR, FIXED, COMPOSITION	SCJ	EA	2
13	20	PAGEZ	9005-00-110-7020	RCR070402J5	01040	RESISTOR, FIXED, COMPOSITION	SCJ	EA	1
13	20	PAGEZ	9005-00-140-1100	RCR070202J5	01040	RESISTOR, FIXED, COMPOSITION	SCJ	EA	1
13	30	PAGEZ	9005-00-100-0000	RCR070100J5	01040	RESISTOR, FIXED, COMPOSITION	SCJ	EA	3
13	30	PAGEZ	9005-00-110-0710	RCR070470J5	01040	RESISTOR, FIXED, COMPOSITION	SCJ	EA	3
13	30	PAGEZ	9005-00-120-0000	RCR070401J5	01040	RESISTOR, FIXED, COMPOSITION	SCJ	EA	2
13	30	PAGEZ	9005-00-000-0100	04004710	90200	RESISTOR, FILM, WIRE WOUND	SCJ	EA	1
13	34	PAGEZ	9000-00-000-0100	007000	90100	SWITCH, TOGGLE	SCJ	EA	1
13	30	PAGEZ	9000-00-000-0000	000000	90410	SWITCH, PUSH	SCJ	EA	1
13	34	PAGEZ	9010-00-000-0000	100000	70200	SEMICONDUCTOR DEVICE, DIODE	SCJ	EA	1
13	37	PAGEZ	6210-00-004-0100	100-0000-0001-00	70010	LIGHT, INDICATOR	SCJ	EA	1

13	14	15	16	17	18	19	20	21	22	23	24	25	26	27	28	29	30	31	
																		32	33
DESCRIPTION																	QUANTITY		
PART NUMBER																	UNIT		
MATERIAL SPECIFICATION																	UNIT		
PART NAME																	UNIT		
ITEM																	UNIT		
REMARKS OR CODE																	UNIT		
13	24	1000-00-000-0007	7313-40007	1000-00-000-0007	7313-40007	1000-00-000-0007	INSULATOR,BASE	SCJ	EA	3									
13	24	1000-00-000-0044	1000-2	1000-00-000-0044	1000-2	1000-00-000-0044	TERMINAL,STUD	SCJ	EA	10									
13	44	1000-00-000-0074	100-700	1000-00-000-0074	100-700	1000-00-000-0074	JACK,TIP	SCJ	EA	1									
13	44	1000-00-000-0074	100-701	1000-00-000-0074	100-701	1000-00-000-0074	JACK,TIP	SCJ	EA	4									
13	44	1000-00-000-0074	100-707	1000-00-000-0074	100-707	1000-00-000-0074	CARD EJECTOR	SCJ	EA	1									
13	44	1000-00-000-0077	100000-06	1000-00-000-0077	100000-06	1000-00-000-0077	WASHER,LOCK	SCJ	EA	6									
13	44	1000-00-000-0081	100000-000	1000-00-000-0081	100000-000	1000-00-000-0081	WASHER,FLAT	SCJ	EA	6									
13	44	1000-00-000-0081	100000-10	1000-00-000-0081	100000-10	1000-00-000-0081	SCREEN,MACHINE	SCJ	EA	6									
13	44	1000-00-000-0086	100000	1000-00-000-0086	100000	1000-00-000-0086	PRINTED WIRING BOARD	SCJ	EA	1									

NOTE: LATEST NATIONAL STOCK NUMBER AND PART NUMBER ASSIGNMENTS ARE INCLUDED AT END OF INDEX.

STOCK NUMBER	FIGURE NO.	ITEM NO.	STOCK NUMBER	FIGURE NO.	ITEM NO.
9910-00-007-2006	2	10	5905-00-114-8788	2	60
9905-00-012-3347	3	17	5905-00-114-0710	2	46
9935-00-017-3334	2	97	5905-00-114-0710	11	24
9935-00-017-3334	11	61	5905-00-114-0710	13	20
9935-00-017-3334	12	54	5905-00-114-0711	2	52
9935-00-017-3334	13	41	5905-00-114-0711	11	35
9990-00-020-7997	2	91	5905-00-114-0711	12	43
9990-00-020-7997	12	51	5905-00-114-0711	13	31
9990-00-020-7997	13	30	5905-00-114-4388	12	34
9910-00-022-2740	2	9	5905-00-114-5359	2	79
9910-00-022-2740	3	1	5905-00-115-2261	2	64
9905-00-021-2623	2	71	5905-00-115-8055	2	45
5305-00-054-5649	1	9	5905-00-116-2394	11	25
5305-00-054-5651	12	30	5905-00-116-8554	3	13
5305-00-054-5649	1	7	5905-00-116-8355	2	80
5305-00-054-5650	2	95	5905-00-116-8555	3	14
5305-00-054-6654	1	6	5905-00-116-8555	11	33
5305-00-057-0510	13	45	5905-00-116-8556	3	11
5910-00-057-7604	12	10	5905-00-118-4559	2	77
5935-00-868-2379	2	96	5905-00-118-4559	5	1
5935-00-068-2379	11	60	5905-00-118-4559	13	26
5935-00-068-2379	13	40	5905-00-119-3503	2	73
5905-00-869-8897	3	19	5905-00-119-3504	2	40
5905-00-869-1017	11	40	5905-00-119-3504	3	12
5940-00-082-4861	4	2	5905-00-119-3505	12	41
5940-00-882-4861	5	3	5905-00-119-8811	12	39
5940-00-082-4869	3	22	5905-00-119-8811	13	24
5910-00-085-0356	12	15	5905-00-119-8812	11	52
5910-00-085-0386	11	13	5905-00-120-9152	2	67
5910-00-085-0386	12	7	5905-00-120-9154	11	95
5905-00-687-2732	12	46	5905-00-120-9154	12	44
5910-00-184-0144	2	27	5905-00-120-9154	13	22
5905-00-184-5755	11	54	5935-00-120-9209	9	1
5905-00-104-5755	12	33	5905-00-121-9877	11	37
5905-00-104-5755	13	16	5905-00-121-9932	2	68
5905-00-104-8358	2	44	5905-00-121-9938	11	36
5905-00-104-8562	11	46	5905-00-121-9938	13	21
5905-00-104-8365	11	42	5905-00-122-0004	2	54
5905-00-104-8369	11	43	5905-00-122-0004	11	51
5905-00-104-8370	2	63	5905-00-126-6683	2	65
5905-00-105-7623	12	31	5905-00-126-6683	11	31
5905-00-105-7764	13	17	5905-00-128-6281	13	32
5905-00-105-7765	2	57	5905-00-131-1255	3	14
5905-00-105-7765	3	9	5935-00-131-8366	10	2
5905-00-105-7765	5	4	5905-00-131-9729	11	36
5905-00-105-7767	2	49	5910-00-134-0628	3	2
5905-00-105-7768	12	48	5905-00-135-3971	2	76
5905-00-106-1356	2	47	5905-00-135-3974	12	29
5905-00-106-1356	11	34	5905-00-135-6046	12	35
5905-00-106-1356	12	30	5905-00-136-3890	11	40
5905-00-106-1356	13	23	5905-00-136-3891	2	75
5905-00-106-1357	4	4	5905-00-136-3891	11	47
5905-00-106-3666	2	43	5905-00-136-8406	2	53
5905-00-106-3666	3	15	5905-00-136-8406	11	45
5905-00-106-3666	11	50	5905-00-138-4932	2	80
5905-00-106-3666	12	36	5905-00-141-0717	2	60
5905-00-106-3666	13	30	5905-00-141-0744	13	18
5905-00-106-3787	11	28	5905-00-141-1132	2	78
5905-00-106-9356	2	39	5905-00-141-1168	13	29
5905-00-107-0656	11	22	5905-00-141-1183	2	70
5905-00-110-0388	2	55	5905-00-141-1183	11	94
5905-00-110-8388	3	10	5905-00-141-1183	13	27
5905-00-110-0388	5	5	5905-00-141-1295	2	56
5905-00-110-0388	12	37	5905-00-141-1295	11	41
5905-00-110-7620	2	51	5945-00-146-5006	2	31
5905-00-110-7620	9	3	5945-00-146-5006	12	20
5905-00-110-7622	13	25	5910-00-146-8558	11	8
5905-00-110-7622	2	42	5910-00-146-8559	11	15
5905-00-110-7622	12	40	5910-00-147-0652	11	3
5905-00-110-7622	13	28	5910-00-147-0653	11	11
5905-00-111-1481	11	39	5910-00-147-0705	11	6
5905-00-111-4845	12	32	5905-00-147-0925	13	19
5905-00-111-8357	2	59	5910-00-147-4088	2	20
5905-00-111-8394	12	42	5910-00-153-3864	2	8
5950-00-312-4613	2	33	5910-00-155-8584	2	3
5950-00-112-4614	2	34	5910-00-156-6259	2	22
5950-00-112-4618	2	82	5910-00-156-6261	2	25
5950-00-112-4619	2	84	5910-00-156-6278	2	7
5950-00-112-4620	2	83	5910-00-156-6282	2	1
5910-00-113-9246	12	6	5910-00-176-7667	12	1

SECTION IV

NATIONAL STOCK NUMBER AND PART NUMBER INDEX

TM 11-5805-610-24P/TO 31W2-4-252-4

STOCK NUMBER	FIGURE NO.	ITEM NO.	STOCK NUMBER	FIGURE NO.	ITEM NO.
5910-00-177-4300	3	4	5910-00-880-6664	2	11
5910-00-180-7264	2	13	5910-00-880-6664	11	14
5910-00-183-7377	10	4	5985-00-319-7709	11	23
5910-00-183-7377	13	43	5961-00-010-9856	11	21
5910-00-193-9477	12	14	5910-00-623-1436	11	1
5910-00-193-9477	13	5	5910-00-823-1436	12	11
5910-00-193-9445	12	35	5910-00-827-1288	12	5
5961-00-222-3230	2	35	5910-00-827-1288	13	2
5961-00-222-3230	11	19	5961-00-828-4720	12	25
5961-00-222-3230	12	21	5961-00-828-8721	2	36
5961-00-222-3230	13	1	5961-00-828-8721	3	6
5985-00-228-5886	11	14	5961-00-828-8721	3	9
5961-00-232-3017	2	64	5935-00-638-6348	7	5
5840-00-209-5149	11	50	5985-00-853-2421	2	72
5840-00-289-0249	12	90	5965-00-853-5523	12	30
5840-00-295-8149	13	39	5905-00-639-5568	12	27
5985-00-243-8325	2	46	5961-00-656-6563	2	67
5962-00-264-5863	11	20	5961-00-858-6563	3	20
5895-00-249-2198	1	10	5946-00-651-2719	7	2
5895-00-590-5970	2	98	5920-00-657-8413	7	3
5895-00-550-5970	11	62	5920-00-657-8417	4	5
5895-00-380-5370	12	33	5920-00-837-8933	7	4
5895-00-350-3370	13	48	5905-00-658-7256	2	30
5895-00-350-5496	10	6	5961-00-865-1272	3	21
5905-00-369-6932	2	74	5950-00-865-5337	13	35
5905-00-369-6932	11	24	5905-00-878-8489	11	38
5910-00-480-4526	3	3	5961-00-810-4783	2	30
5905-00-480-4328	2	41	5961-00-880-4783	3	6
5905-00-402-1900	12	29	5961-00-480-4783	4	1
5902-00-403-3434	11	33	5961-00-480-4783	12	17
5895-00-405-9164	1	1	5910-00-882-6891	11	12
5895-00-405-9164	0	1	5910-00-684-1434	11	10
5961-00-410-8882	12	24	5961-00-692-0734	2	28
5950-00-419-8434	11	37	5961-00-692-0734	5	2
5920-00-421-8269	4	3	5910-00-894-6874	13	6
6629-00-438-8843	0	3	5961-00-560-6711	11	16
5985-00-435-6374	2	61	5961-00-980-6711	12	19
5985-00-451-7583	1	0	5961-00-960-6711	13	11
5895-00-484-6138	0	5	5930-00-982-5197	13	34
5895-00-464-0185	0	4	5961-00-912-9608	2	38
5895-00-464-8186	0	6	5961-00-912-9668	3	7
5910-00-466-1147	11	3	5961-00-912-5890	12	26
5961-00-485-4545	2	62	5999-00-919-4224	2	30
5961-00-488-7379	2	65	5910-00-921-8782	2	5
5905-00-498-8223	2	64	5910-00-921-8782	11	7
5982-00-493-5993	11	18	5935-00-924-5230	2	69
5910-00-496-7007	3	3	5910-00-928-4904	2	19
5910-00-542-2010	12	2	5910-00-928-8888	14	7
5310-00-595-6211	12	99	5310-00-929-6395	2	94
5310-00-595-6211	13	44	5910-00-931-1737	11	9
5310-00-616-3535	1	3	5910-00-931-5650	12	4
5905-00-617-6741	11	29	5910-00-931-5416	2	12
5961-00-669-6884	2	29	5910-00-931-5416	12	14
5905-00-682-0214	11	49	5310-00-934-9748	10	3
6240-00-683-8560	13	13	5310-00-934-9748	12	37
5340-00-684-9350	1	2	5910-00-942-2715	2	17
5905-00-689-1835	2	30	5310-00-945-3575	2	92
5961-00-689-1984	12	49	5945-00-454-3351	2	32
5910-00-717-0169	11	4	5845-00-954-3351	7	6
5310-00-722-5998	1	4	5910-00-937-7020	13	4
5310-00-722-5990	2	93	5910-00-864-5240	12	3
5961-00-727-3562	11	17	5920-00-560-3238	6	4
5961-00-727-3562	13	12	5905-00-969-5854	3	18
5961-00-752-0150	12	23	5961-00-978-9666	2	37
5961-00-752-3957	11	32	5961-00-978-9667	12	22
5961-00-760-9548	12	10	5961-00-978-9667	13	19
5910-00-774-7190	1	3	5305-00-983-4730	10	5
5910-00-777-6910	13	0	5305-00-984-4976	10	8
5999-00-789-3794	12	32	5945-00-984-9829	13	14
5348-00-792-9681	2	99	5920-00-895-6079	6	7
5740-00-798-8797	9	2	5910-00-996-0741	11	2
5905-00-804-8139	13	33	5905-00-997-0141	2	61

PART NUMBER	FIG. NO.	ITEM NO.	PART NUMBER	FIG. NO.	ITEM NO.
ARBA146112M	70109	13	CG6N750-10PCT	91418	11
DR1660-25	14033	12	CKC48X104K	81349	2
BR589-25	14033	12	CK068X104K	81349	3

SECTION IV

NATIONAL TOLL NUMBER AND PART NUMBER INDEX

TM 11-5805-610-24P/TO 31W2-4-252-4

PART NUMBER	FSCN	FIG. NO.	ITEM NO.	PART NUMBER	FSCN	FIG. NO.	ITEM NO.
CM068X124K	81349	3	5	RCR07G103JS	81349	2	43
CM068X473K	81349	3	2	RCR07G103JS	81349	3	15
CM068X474K	81349	3	3	RCR07G103JS	81349	11	50
CM15E101J03	81349	11	4	RCR07G103JS	81349	12	26
CSR13F396KS	81349	11	2	RCR07G103JS	81349	13	30
CSR13G475KS	81349	2	10	RCR07G104JS	81349	2	55
CSR13G825KS	81349	2	20	RCR07G104JS	81349	3	10
C1CCM750-10PCT	91418	13	6	RCR07G104JS	81349	5	1
C2CCM750-10PCT	91418	11	9	RCR07G104JS	81349	12	27
C33V750-10PCT	91418	2	5	RCR07G105JS	81349	3	13
C33M750-10PCT	91418	11	7	RCR07G113JS	81349	2	74
C47M750-10PCT	91418	2	12	RC407G113JS	81349	11	26
C47M750-10PCT	91418	12	14	RCR07G121JS	81349	11	52
CM19F12G0500WV1CR	72136	11	5	RCR07G122JS	81349	3	16
F22ATM40	72962	10	7	RCR07G124JS	81349	2	41
GA329-25	10241	6	8	RCR07G132JS	81349	11	46
CM71-2	71400	6	7	RCR07G133JS	81349	11	42
CM71-33	71400	7	3	RCR07G134JS	81349	11	39
CM72	71400	7	4	RCR07G150JS	81349	2	76
CM75	71400	6	5	RCR07G151JS	81349	12	39
N17	71400	6	4	RCR07G151JS	81349	13	24
1C42A	10241	11	18	RCR07G152JS	81349	2	47
1C45A	10241	11	20	RCR07G152JS	81349	11	34
1C51A	10241	2	35	RCR07G152JS	81349	12	38
1C51A	10241	11	19	RCR07G152JS	81349	13	23
1V10CC8-061	10241	2	33	RCR07G153JS	81349	2	60
1V10CC8-062	10241	2	34	RCR07G153JS	81349	3	14
JF001-10PCT	91418	2	4	RCR07G153JS	81349	11	33
JF001-10PCT	91418	12	16	RCR07G154JS	81349	2	79
JF001-10PCT	91418	13	5	RCR07G201JS	81349	12	32
JF100-10PCT	91418	12	6	RCR07G202JS	81349	2	69
JF120-10PCT	91418	2	7	RCR07G203JS	81349	2	39
JF220-10PCT	91418	11	13	RCR07G222JS	81349	13	17
JF220-10PCT	91418	12	7	RCR07G223JS	81349	3	11
JF280-21	10241	6	1	RCR07G224JS	81349	2	57
JF470-10PCT	91418	2	11	RCR07G224JS	81349	3	9
JF470-10PCT	91418	11	14	RCR07G224JS	81349	5	4
JF820-10PCT	10241	8	3	RCR07G242JS	81349	2	53
MC10864	10241	10	1	RCR07G242JS	81349	11	45
MC10C64-08	10241	10	6	RCR07G243JS	81349	2	56
MC10064-24	04713	12	25	RCR07G243JS	81349	11	41
MJE521	14655	12	8	RCR07G271JS	81349	2	73
MMW05P33	14655	12	4	RCR07G273JS	81349	2	40
MMW05W1	14655	13	7	RCR07G273JS	81349	3	12
MMW2W1	95416	13	35	RCR07G274JS	81349	2	67
MSP105FRED	95146	13	34	RCR07G302JS	81349	11	36
PS1205W	96906	12	59	RCR07G302JS	81349	2	48
MS15795-803	96906	13	44	RCR07G331JS	81349	11	24
MS15795-803	96906	1	4	RCR07G331JS	81349	13	20
MS15155-805	96906	2	93	RCR07G332JS	81349	2	65
MS15795-805	96906	10	5	RCR07G333JS	81349	11	31
MS35206-218	96906	10	8	RCR07G333JS	81349	2	77
MS35206-219	96906	10	4	RCR07G333JS	81349	5	1
MS35333-36	96906	10	4	RCR07G333JS	81349	13	26
MS35333-36	96906	13	43	RCR07G334JS	81349	2	62
MS35333-71	96906	1	5	RCR07G334JS	81349	2	63
MS35338-136	96906	2	94	RCR07G361JS	81349	11	43
MS35649-244	96906	10	3	RCR07G362JS	81349	2	68
MS35649-244	96906	12	57	RCR07G391JS	81349	2	45
MS51957-15	96906	1	9	RCR07G393JS	81349	12	29
MS51957-17	96906	12	58	RCR07G431JS	81349	2	54
MS51957-25	96906	1	7	RCR07G433JS	81349	11	51
MS51957-26	96906	2	55	RCR07G433JS	81349	11	55
MS51957-30	96906	1	6	RCR07G471JS	81349	12	44
MS51958-13	96906	13	45	RCR07G471JS	81349	13	22
M25-22-20PCT	91418	2	1	RCR07G472JS	81349	2	52
NY06-040	06530	12	56	RCR07G472JS	81349	11	35
PCW109C35	24138	2	26	RCR07G472JS	81349	12	43
PCW10PD50	24138	2	22	RCR07G473JS	81349	13	31
PCW25PE35	24138	2	23	RCR07G474JS	81349	2	60
PCW59B35	24138	2	25	RCR07G511JS	81349	2	49
PJ104	70674	7	2	RCR07G511JS	81349	11	25
PJ106	70674	9	2	RCR07G513J	81349	11	60
RCR07G100JS	81349	11	22	RCR07G561JS	81349	12	48
RCR07G101JS	81349	2	70	RCR07G562JS	81349	13	18
RCR07G101JS	81349	11	54	RCR07G563JS	81349	4	4
RCR07G101JS	81349	13	27	RCR07G621JS	81349	2	75
RCR07G102JS	81349	2	51	RCR07G621JS	81349	11	47
RCR07G102JS	81349	9	3	RCR07G622JS	81349	11	44
RCR07G102JS	81349	13	25	RCR07G682JS	81349	2	42

SECTION IV

NATIONAL STOCK NUMBER AND PART NUMBER INDEX

TM 11-5805-610-24P/TO 31W2-4-232-4

PART NUMBER	FSCN	FIG. NO.	ITEM NO.	PART NUMBER	FSCN	FIG. NO.	ITEM NO.
RCR07G682JS	81349	22	40	IN4804	80131	2	28
RCR07G682J7	81349	19	41	IN456A	80131	5	2
RCR07G7531JS	81349	2	78	IN456A	99180	11	16
RCR07G7531JS	81349	11	18	IN456A	99180	12	19
RCR07G7531JS	81349	13	21	IN456A	99180	13	11
RCR07G811JS	81349	12	33	IN474B	04713	3	21
RCR07G832JS	81349	2	44	IN4750A	04713	2	87
RCR07G823JS	81349	2	81	IN4750A	04713	3	29
RCR07G912JS	81349	2	64	IN5242	04713	2	86
RCR2CG100JS	81349	11	56	IN5266	04713	2	88
RCR2CG100JS	81349	12	38	IN53498	80131	12	49
RCR2CG100JS	81349	13	16	IN5359A	04713	2	85
RCR2CG222JS	81349	13	29	IN5638	72293	13	36
RCR2CG481JS	81349	2	59	101-3830-0931-201	72619	13	37
RCR32G621JS	81349	13	32	105-751	74970	2	97
RCR48C404GPS	81349	2	71	105-751	74970	11	61
AN6003740F	81349	3	19	105-751	74970	12	54
AN6003920F	81349	3	17	105-751	74970	13	41
AN6003620F	81349	3	18	105-751	74970	2	96
AN65C1802F	81349	11	49	105-753	74970	11	60
AN65C1822F	81349	11	40	105-753	74970	13	40
AN65C1212F	81349	11	32	105754	74970	12	95
SE12XC01	81349	3	22	15D105X9035A2	56289	2	27
SE12XC04	81349	4	2	150D186X905CR2	56289	4	3
SE12XC04	81349	3	3	150D2246X9035R2	56289	2	19
SW02-20PCT	10241	2	17	150475X9035B2	56289	3	4
SW272-22	10241	6	3	1558-2	71279	11	58
SR272021	10241	6	6	1558-2	71279	12	50
TC05P80020PCT	91418	11	19	1558-2	71279	13	39
TA01-35PCT	91418	2	13	2N3638A	80131	2	38
TA01P820PCT	91418	12	2	2N3638A	80131	3	7
TA05-35PCT	91418	2	16	2N3638A	80131	12	26
TCW8224KK1	10241	2	18	2N3643	80131	2	37
				2N3643	80131	12	22
				2N3643	80131	13	15
				2N4918	04713	12	24
				2N5459	04713	2	36
				2N5459	04713	3	8
				2N643	80131	11	21
				2N697	80131	12	23
TCPC031N1	10241	11	3	225-22221-103	02660	1	8
TCP2C821N2	10241	11	8	235-594	02660	9	1
TCP22021K2	10241	11	11	2320	83380	1	3
TCP79021W2	10241	12	15	240E2025	56289	7	1
TE1102	56289	12	9	242E1R05	56289	12	47
TE1106	56289	13	10	242E1035	56289	11	29
TE1160	56289	12	13	242E1215	56289	12	30
TE1162	56289	12	5	242E1521	56289	2	72
TE1162	56289	13	2	242E2005	56289	12	28
TE1164	56289	11	1	242E3R05	56289	12	46
TE1164	56289	12	11	242R3305	56289	12	45
TE1211	56289	12	12	242E4715	56289	13	33
TE1307	56289	13	3	242E6025	56289	11	23
TE1411	56289	12	1	242E6825	56289	11	30
TS154CCCC15-5MADC	02288	7	6	243E1815	56289	2	58
TW1087	56289	13	9	247E1015	56289	12	27
TXBF032-0250	58972	12	52	2571A12	10241	8	2
WWFID22	14655	13	8	26A	10241	8	5
WWFIS1	14655	11	12	26A06	10241	12	60
WWFIW1	14655	13	4	29F1003G1C	12673	2	13
XA10017	10241	2	82	29P305261C	91418	2	3
XA10021	10241	11	57	297-12895-1	46859	3	23
XA10072	10241	2	84	30040-2	02288	2	99
XA10033	10241	2	83	30054-4	02288	2	89
XB10008	10241	2	32	30055-2	78389	7	5
XR10010	10241	2	31	345	88806	13	13
XR10010	10241	12	20	3800P1-203	89269	11	27
X201R1038	71450	2	46	390-1075-14	46859	2	8
X201R1C48	71450	2	46	3935-7	71279	2	92
X201R2530	71450	11	53	398-13887-1	46859	1	12
X2D1R2548	71450	2	50	398-13888-1	46859	1	11
X201R5048	79042	2	61	398-13888-2	46859	4	5
IC51A	10241	12	21	398-13889-1	46859	1	13
IC51A	10241	13	1	398-13889-2	46859	5	6
IN277	80131	12	18	398-13890-1	46859	1	10
IN277	81349	2	29	47A	10241	8	4
IN4C02	80131	2	30	47A06	10241	11	63
IN4002	80131	3	6	49-1-1-0	94222	1	2
IN4002	80131	4	1	50447	10241	2	97
IN4002	80131	12	17				
IN4309	80131	11	17				

PART NUMBER	FSCN	FIG. NO.	ITEM NO.	PART NUMBER	FSCN	FIG. NO.	ITEM NO.
60471	10241	11	42	77PR2K	73130	12	42
60472	10241	12	33	77PR2CD	73130	12	31
60473	10241	13	42	77PR25K	73130	13	19
60478	10241	4	2	77PR5K	73130	11	37
6055	10241	1	1	7717-4MMNT	13103	2	91
6055	10241	0	1	7717-4MMNT	13103	11	59
607806	10241	2	100	7717-4MMNT	13103	12	51
626A	10241	8	4	7717-4MMNT	13103	13	38
628A06	10241	13	46	7717-4MMNT	13103	2	90
77PR1K	73130	11	20	REDJ22ND	61312	10	2
77PR10K	73130	12	34				

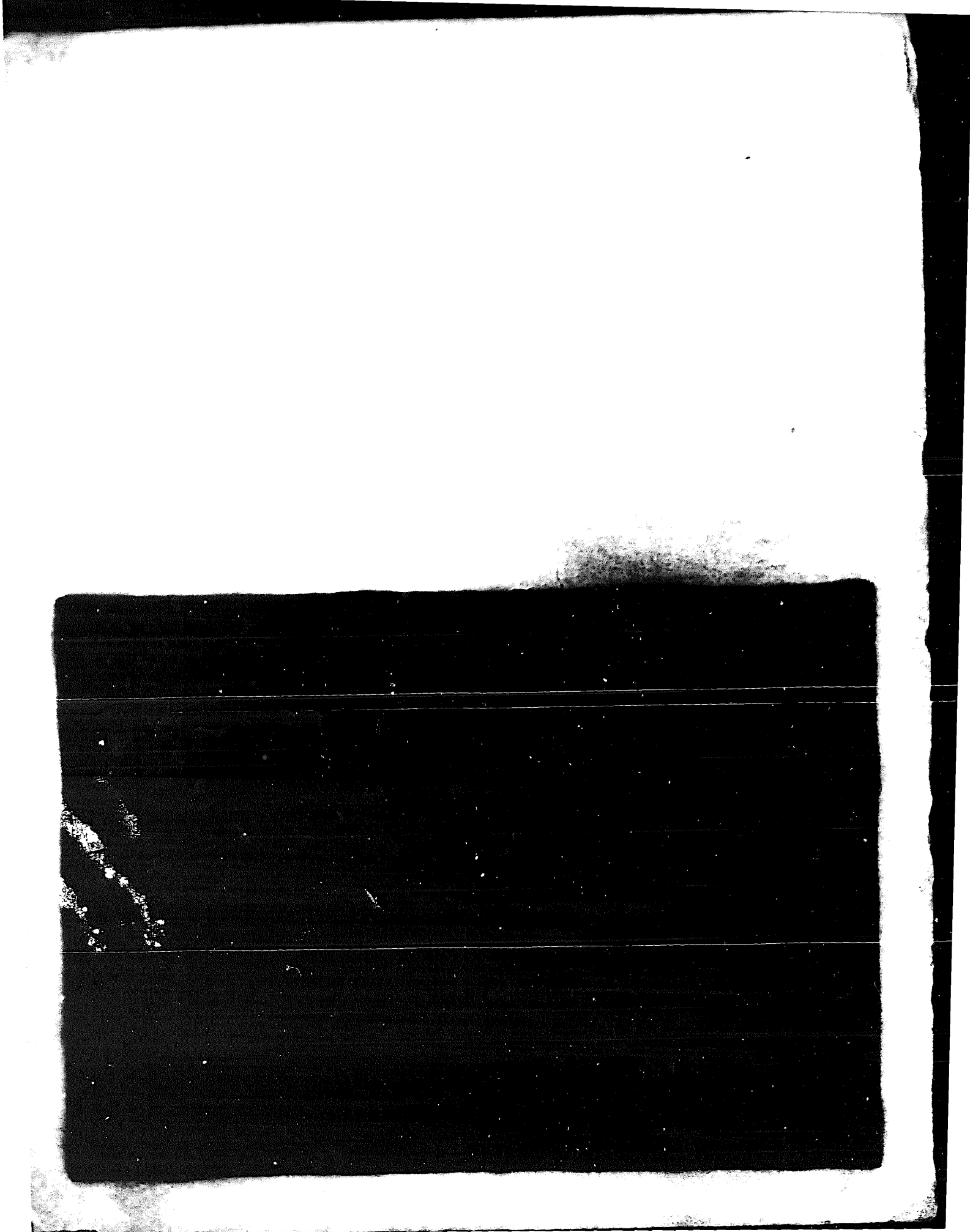
LATEST NATIONAL STOCK NUMBER ASSIGNMENTS

STOCK NUMBER	FIGURE NO.	ITEM NO.
5910-00-238-6033	2	14
5910-00-238-6038	2	21
5910-00-238-6049	2	6
5910-00-238-6054	2	24
5910-00-238-6055	2	2
5910-00-431-8162	12	13
6210-00-504-2106	13	37
5310-00-656-0317	10	7
5910-00-827-1209	12	12
5910-00-879-0123	13	3
5905-00-928-1672	12	45
5961-00-998-3666	13	36

LATEST PART NUMBER ASSIGNMENTS

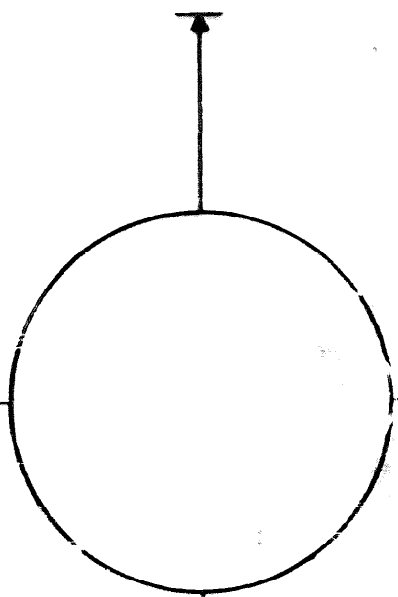
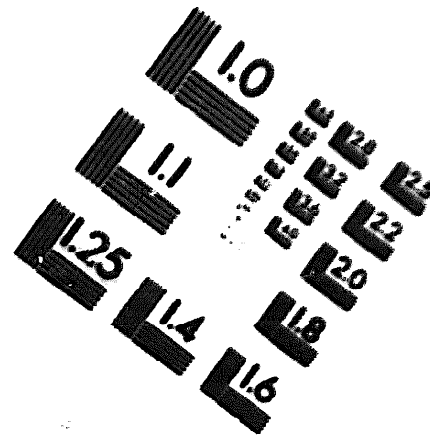
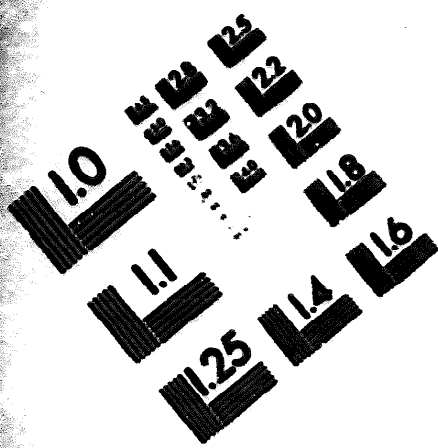
PART NUMBER	FSCN	FIGURE NO.	ITEM NO.
TCMB105JS1	10241	2	14
TCMB205JT1	10241	2	21
TCMB334JM1	10241	2	6
TCMB395JV2	10241	2	24
TCMB474JM1	10241	2	2

(42 blank)



DEPARTMENT OF THE ARMY

MICROFORM
TEST TARGET



150 MM

1.0 mm (ø= .01 mm)

ABCDEFGHIJKLMN OPQRSTUVWXYZ 1234567890
abcdefghijklmnopqrstuvwxyz %\$# 1/2 1/4 1/8 —+ x&@*

1.5 mm (ø= 1.00 mm)

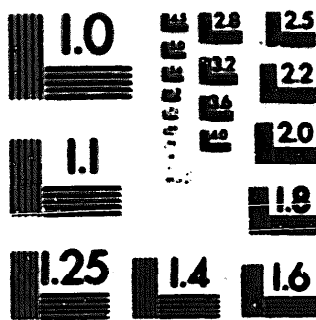
ABCDEFGHIJKLMN OPQRSTUVWXYZ 1234567890
abcdefghijklmnopqrstuvwxyz %\$# 1/2 1/4 1/8 —+ x&@*

2.0 mm (ø= 1.37 mm)

ABCDEFGHIJKLMN OPQRSTUVWXYZ
abcdefghijklmnopqrstuvwxyz
1234567890 \$c£/%# 1/2 1/4 1/8 —+ x&@*

2.5 mm (ø= 1.77 mm)

ABCDEFGHIJKLMN OPQRSTUVWXYZ
abcdefghijklmnopqrstuvwxyz
1234567890 \$c£/%# 1/2 1/4 1/8 —+ x&@*



1.0 mm (ø= .01 mm)

ABCDEFGHIJKLMN OPQRSTUVWXYZ 1234567890
abcdefghijklmnopqrstuvwxyz %\$# 1/2 1/4 1/8 —+ x&@*

1.5 mm (ø= 1.00 mm)

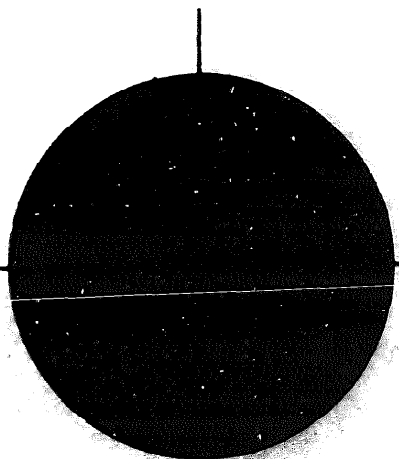
ABCDEFGHIJKLMN OPQRSTUVWXYZ 1234567890
abcdefghijklmnopqrstuvwxyz %\$# 1/2 1/4 1/8 —+ x&@*

2.0 mm (ø= 1.37 mm)

ABCDEFGHIJKLMN OPQRSTUVWXYZ
abcdefghijklmnopqrstuvwxyz
1234567890 \$c£/%# 1/2 1/4 1/8 —+ x&@*

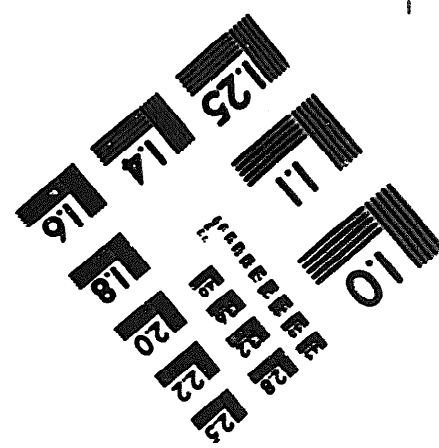
2.5 mm (ø= 1.77 mm)

ABCDEFGHIJKLMN OPQRSTUVWXYZ
abcdefghijklmnopqrstuvwxyz
1234567890 \$c£/%# 1/2 1/4 1/8 —+ x&@*



200 MM

250 MM



DEPARTMENT OF THE ARMY
US ARMY AG PUBLICATIONS CENTER
1422 WOODRUFF ROAD
ST. LOUIS, MISSOURI 63114

OFFICIAL BUSINESS
PENALTY FOR PRIVATE USE \$300

POSTAGE AND FEES PAID
DEPARTMENT OF THE ARMY
600 314



END

02-05-83

DATE



FILL IN YOUR
UNIT'S ADDRESS

FOLD BACK

DEPARTMENT OF THE ARMY

OFFICIAL BUSINESS

PENALTY FOR PRIVATE USE, \$300

POSTAGE AND FEES PAID
DEPARTMENT OF THE ARMY
DDG-314



Commander
US Army Electronics Command
ATTN: DRSEL-MA-Q
Fort Monmouth, New Jersey 07703

TEAR ALONG DOTTED LINE

FOLD BACK

REVERSE OF DA FORM 3826-3 (7-57)

By Order of the Secretaries of the Army, the Navy, and the Air Force:

BERNARD W. ROGERS
General, United States Army
Chief of Staff

Official:

PAUL T. SMITH
Major General, United States Army
The Adjutant General

DAVID C. JONES, General, USAF
Chief of Staff

Official:

F. M. ROGERS, General, USAF
Commander, Air Force
Logistics Command

DISTRIBUTION:

Active Army

USASA (2)
 DARCOM (1)
 TECOM (2)
 OS Maj Comd (3)
 USACC (5)
 USACC-PAC (2)
 USACC Sig Gp Okinawa (10)
 USACC Sig Gp Taiwan (10)
 USACC Sig Bde, Korea (2)
 Eighth USA (3)
 I Corps (2)
 USAICS (3)
 HISA (Ft Monmouth) (33)

AD (1) except
 SAAD (20)
 TOAD (14)
 LBAD (5)
 USA Dep (pac) (2)
 USA Camp Carroll Dep (2)
 USACSA (3)
 MAAG, Republic of China (2)
 JUSMAG, Korea (1)
 Sig FLDMS (pac) (1)
 Units org under fol TOE:
 29-134 (1)
 29-136 (1)

ARNG & USAR: None

For explanation of abbreviations used, see AR 310-50.

FILL IN YOUR
UNIT'S ADDRESS

FOLD BACK

DEPARTMENT OF THE ARMY

OFFICIAL BUSINESS
PENALTY FOR PRIVATE USE, \$300

POSTAGE AND FEES PAID
DEPARTMENT OF THE ARMY
DDO-314



Commander
US Army Electronics Command
ATTN: DRSEL-MA-Q
Fort Monmouth, New Jersey 07703

TEAR ALONG DOTTED LINE

FOLD BACK

REVERSE OF DA FORM 3026-2 (TEST)

RECOMMENDED CHANGES TO EQUIPMENT TECHNICAL MANUALS



SOMETHING WRONG WITH THIS MANUAL?

THEN... JOT DOWN THE DOPE ABOUT IT ON THIS FORM, TEAR IT OUT, FOLD IT AND DROP IT IN THE MAIL!

FROM: (YOUR UNIT'S COMPLETE ADDRESS)

DATE

PUBLICATION NUMBER

DATE

TITLE

BE EXACT... PIN-POINT WHERE IT IS

IN THIS SPACE TELL WHAT IS WRONG AND WHAT SHOULD BE DONE ABOUT IT.

PAGE NO.

PARA-GRAPH

FIGURE NO.

TABLE NO.

TEAR ALONG DOTTED LINE

TYPE NAME, GRADE OR TITLE, AND TELEPHONE NUMBER

SIGN HERE:

DA FORM 2028-2 (TEST)

P.S.--IF YOUR OUTFIT WANTS TO KNOW ABOUT YOUR MANUAL "FIND," MAKE A CARBON COPY OF THIS AND GIVE IT TO YOUR HEADQUARTERS.

RECOMMENDED CHANGES TO EQUIPMENT TECHNICAL MANUALS



SOMETHING WRONG WITH THIS MANUAL?

THEN... JOT DOWN THE DOPE ABOUT IT ON THIS FORM, TEAR IT OUT, FOLD IT AND DROP IT IN THE MAIL!

FROM: (YOUR UNIT'S COMPLETE ADDRESS)
 Commander
 Stateside Army Depot
 ATTN: AMSTA-08
 Stateside, N.J. 07703

DATE 10 July 1975

PUBLICATION NUMBER: **TN 11-5840-340-12** DATE: **23 Jan 74** TITLE: **Radar Set AN/SPC-76**

BE EXACT... PIN-POINT WHERE IT IS

IN THIS SPACE TELL WHAT IS WRONG AND WHAT SHOULD BE DONE ABOUT IT.

PAGE NO.	PARA-GRAPH	FIGURE NO.	TABLE NO.
2-25	2-28		
3-10	3-3		3-1
5-6	5-8		
		FO3	

Recommend that the installation antenna alignment procedure be changed throughout to specify a 2° IFF antenna lag rather than 1°.

REASON: Experience has shown that with only a 1° lag, the antenna servo system is too sensitive to wind gusting in excess of 20 knots, and has a tendency to rapidly accelerate and decelerate as it hunts, causing strain to the drive train. Hunting is minimized by adjusting the lag to 2° without degradation of operation.

Item 5, Function column. Change "2 db" to "3db."

REASON: The adjustment procedure for the TRANS POWER FAULT indicator calls for a 3 db (500 watts) adjustment to light the TRANS POWER FAULT indicator.

Add new step f.1 to read, "Replace cover plate removed in step e.1, above."

REASON: To replace the cover plate.

Zone C 3. On J1-2, change "+24 VDC to "+5 VDC."

REASON: This is the output line of the 5 VDC power supply. + 24 VDC is the input voltage.

TYPED NAME, GRADE OR TITLE, AND TELEPHONE NUMBER
 SSG I. M. DeSpirito 999-1776

SIGN HERE:
SSG I. M. DeSpirito

DA FORM 2028-2 (TEST) 1 AUG 74

P.S.—IF YOUR OUTFIT WANTS TO KNOW ABOUT YOUR MANUAL "FIND" MAKE A CARBON COPY OF THIS AND GIVE IT TO YOUR HEADQUARTERS.

HISA 1686-75

TEAR ALONG DOTTED LINE



SOMETHING WRONG WITH THIS MANUAL?

THEN... JOT DOWN THE DOPE ABOUT IT ON THIS FORM, TEAR IT OUT, FOLD IT AND DROP IT IN THE MAIL!

FROM: (YOUR UNIT'S COMPLETE ADDRESS)

DATE

PUBLICATION NUMBER

DATE

TITLE

BE EXACT... PIN-POINT WHERE IT IS

IN THIS SPACE TELL WHAT IS WRONG AND WHAT SHOULD BE DONE ABOUT IT:

PAGE NO.	PARA-GRAPH	FIGURE NO.	TABLE NO.
----------	------------	------------	-----------

TEAR ALONG DOTTED LINE

TYPED NAME, GRADE OR TITLE, AND TELEPHONE NUMBER

SIGN HERE:

DA FORM 2028-2 (TEST) 1 AUG 75

P.S.—IF YOUR OUTFIT WANTS TO KNOW ABOUT YOUR MANUAL "FIND," MAKE A CARBON COPY OF THIS AND GIVE IT TO YOUR HEADQUARTERS.